







“It’s always been about the effectiveness and the importance of every person helping. It’s always been about that.”

— Neal Ball, Founder

## contents

- 2 To All Our Partners
- 4 *Amazing Grace* - IBé
- 6 In Their Words
- 21 The Work
- 26 Financial Statements
- 28 Management Team

Cover: *Children play in a displaced persons community in Northern Uganda*

Left: *Water system constructed by Congolese refugees at Kiziba Camp in Rwanda*

**This document was produced by the American Refugee Committee.**

Cover: Miguel Samper

Photography: Though we’re unable to credit all those who created these beautiful photos, we thank the talented photographers whose images appear in this report.





An earthquake survivor in Haiti saws wood to build the clinic at Terrain Acra camp in Port-au-Prince.



## To All Our Partners:

People are the center of everything we are.

Refugees have always been our priority. For more than 30 years, the American Refugee Committee has been focused on helping people who've suffered the most terrible misfortune. From Liberia to Thailand, Pakistan to Darfur, we work to get them the lifesaving essentials they need to recover and support them as they work to rebuild their lives.

When you hear the word refugee, it paints a general feeling of loss and urgent need. But, it's far more complicated. If you stepped into a refugee camp and lifted back a tent door, you'd encounter distinct people each with their own experience.

You'd find a grandfather who feels left behind, his role as elder counsel for his family and community stripped from him. You'd find a nursing mother. There isn't enough food for anyone to eat, and she is desperately worried her milk will run out.

You'd meet an 8-year-old girl who is confused why some of the other kids are acting so sad and don't want to play. And you'd meet a 16-year-old boy. He sees no opportunity, and he's unsure what the future will hold for him.

Now, imagine the American Refugee Committee phone lines. A young girl calls. She wants to do something for people in Darfur. She thinks she could organize a bake sale to raise money, but she wonders if that would even make a difference.

A volunteer nurse calls from Haiti. She's been working 18-hour days since the quake happened. She's exhausted and misses her family, but she's calling to see if she can extend her time in Haiti for one more week.

An employee from a local corporation calls. He's held meetings at work to raise awareness about Haiti and organized company-wide drives that raised thousands of dollars. He's proud of the difference their efforts will make.

Working with millions of people each year, there is one thing we know for sure. Each person has a unique perspective, their own contribution to make in the world. It's the American Refugee Committee's job to support each individual – wherever they are – in their journey to make their lives better and make a difference.

The potential for good is limitless if we can embrace the individual spirit and drive of each person wanting to help communities recover from disaster.

Thank you for your belief in the human spirit and your commitment to those in need.

Sincerely yours,

Daniel & John

A handwritten signature in black ink, appearing to read 'Daniel Wordsworth', written over a light grey background.

Daniel Wordsworth  
President / CEO

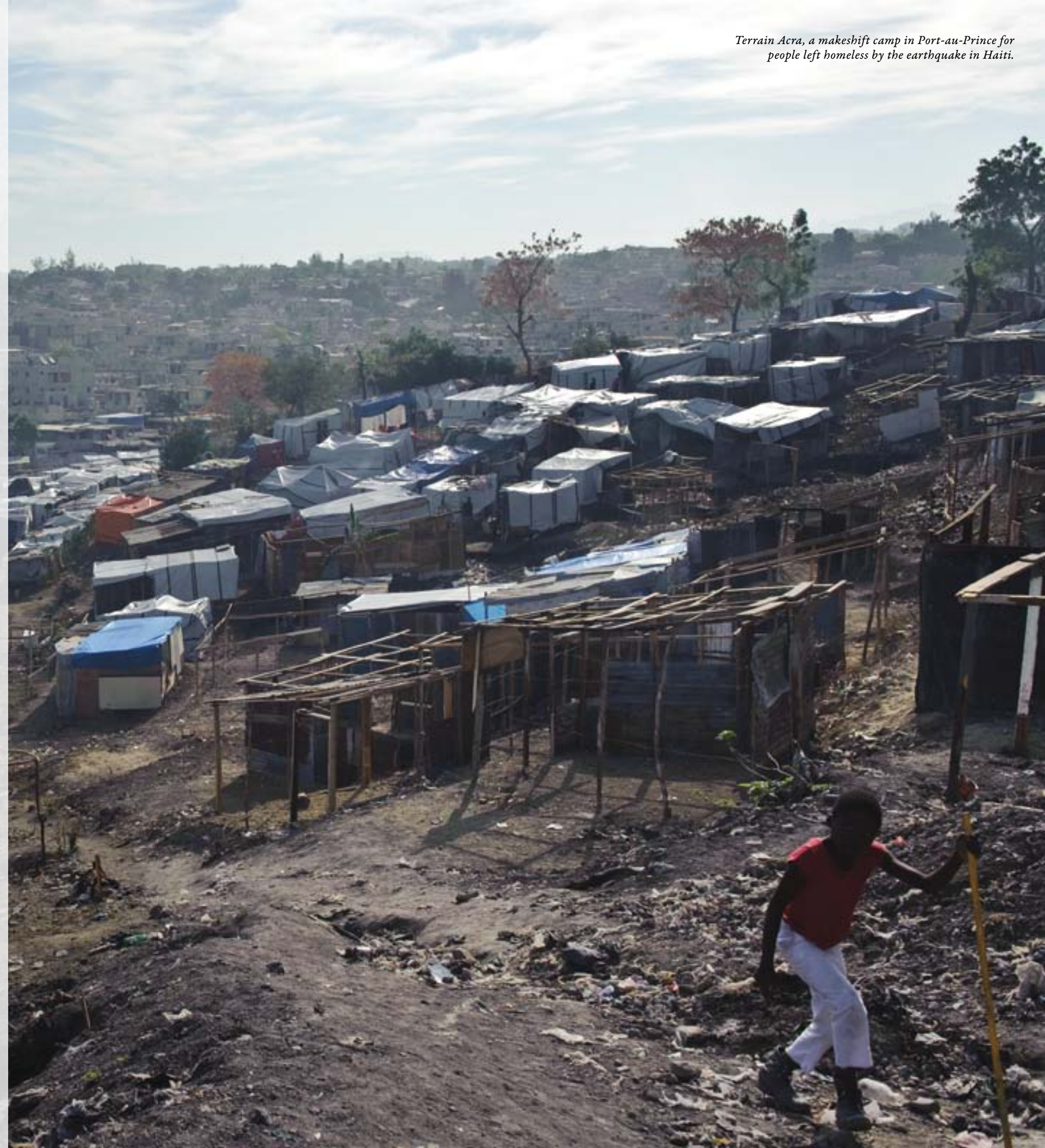
A handwritten signature in black ink, appearing to read 'John A. Gappa', written over a light grey background.

John A Gappa  
Chair of the Board



I shouldn't have made it  
But I did  
Because we do  
We climb mountains like we got wings  
Because we do  
We are more than a body  
More than flesh, bones and cartilage  
Just eight fingers and two thumbs  
We make it possible  
Thing out of no thing  
Think and create out of thin air  
Stretch our arms  
And star light cities rise above desert sands  
Let there be light; an abyss is made clear  
Two stones: a beast is slain  
We are the manifestation of a force  
That holds planets in orbit  
And stars from going dim

— An excerpt from *Amazing Grace*,  
by poet - and refugee - IBé







*Hahn Chang doesn't believe in cynicism. A recent high school graduate, he is launching into his adult life fueled by an ideal: that everyone can do something to make the world better. He started out by organizing two charity runs for Darfur, with the help of some friends. Then, at "Hope for Haiti," his fellow students, in exchange for their donations for Haiti earthquake relief, got to vote on which color he should dye his hair. Pink won. During his senior year, Hahn worked as an intern at ARC. He spearheaded the first Junior Advocates conference, giving young supporters tools to raise awareness and funds for refugees.*

“If you do nothing, there's only a chance for failure.”

I'm not a blind optimist. I don't believe that the world can be rid of problems. But I also don't believe the world's problems are just meant to be. Or that they'll fix themselves. I believe that, even if problems persist, you always try to eliminate

as many as you can. By doing something, you ensure that there is a chance for success. If you do nothing, there's only a chance for failure.

While helping refugees is obviously an end for the American Refugee Committee, the donors aren't just a means to it. It's not just about helping out the people in Darfur or in Haiti, who are in desperate need. It's also about helping supporters here.

Obviously they aren't in desperate need for food, shelter, water, health care. But there's a desire that I think all people have — a desire to feel involved, to make a difference, to live a fulfilled life. And I think people have a channel to do that through the American Refugee Committee.

In the Run for Darfur we organized, some people gave money. Some volunteered on a Saturday morning. Some put out flyers in the community. Some gave us their advice. And all these things came together to make a wonderful event.

People could have been cynical and said, "What difference will it make if I help out?" But they didn't say that. And that's the best part. All these people came in with different opinions and ways to help. But they were all united under this idealism that they share.

It's really incredible to see people get excited, knowing they're making a difference. They'll never get to know firsthand the difference they made in the lives of these people, but on some kind of spiritual or supernatural level, they do understand.

I shouldn't have made it  
But I did



HAITI

*Immaculate Jerome, 73, sits in front of what is left of her home. The Haiti earthquake left her family homeless.*





*The earthquake that struck Haiti in January 2010 devastated the country. Hundreds of thousands of people lost their loved ones. More than 1.5 million people were left homeless. Twenty-year-old Marie Ange Damus (“Ange”) was one of those people. Ange came to Camp Hope—a camp managed by the American Refugee Committee. Now, she is a voice for the women and children. They let Ange know the things they need and the health issues they face – Ange makes sure they get the help they need.*

I will never forget the day the earthquake struck because it changed my life. I was living with my cousins and aunties in Port-au-Prince. One of my aunties was killed in the quake. My other auntie and my cousin Jeff survived...but Jeff was trapped in the rubble, and his leg was severely injured. Jeff was rushed to Jimani Clinic in the Dominican Republic for medical care. Now he’s recovering and lives here at Camp Hope. My auntie and I live here with him.

“Now I feel empowered.”

The first week here, I cried a lot. I was always tired. I missed my auntie...she was a mother to me from age 5...she was my friend...she was my auntie.

Then, I got the chance to help and make a difference for my neighbors in the camp. The American Refugee Committee hired me to work with the women and children who live here at Camp Hope. Each day, I walk through the camp and speak with women, mothers and their children. We talk about health and hygiene – the importance of hand washing, how we can get extra food for their babies. They let me know the things they’re still struggling with and what they need to get by.

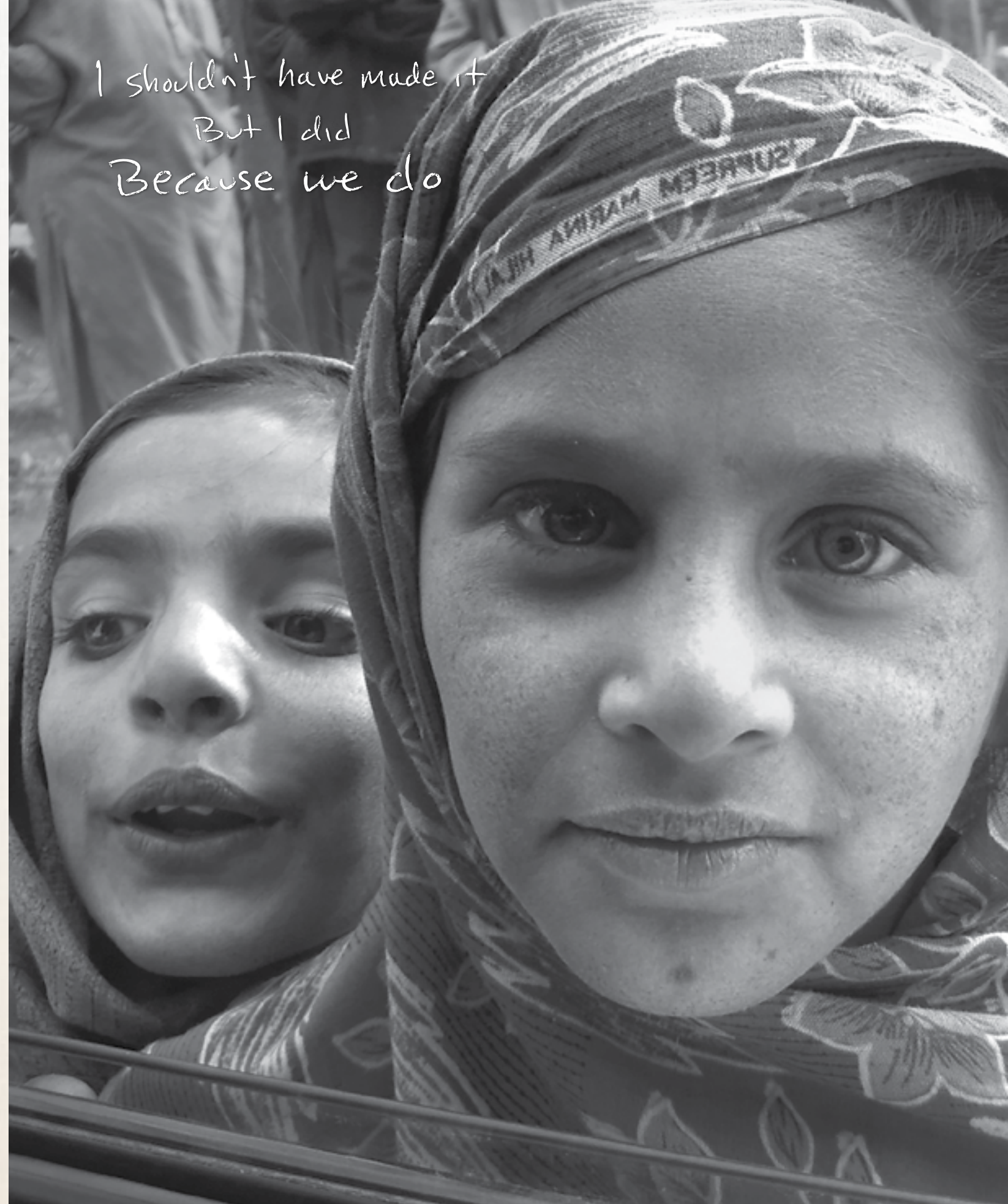
Their needs are very simple—they need more clothes, some food, soap and women’s hygiene items. When I meet with the camp leaders, I make sure the needs of the women and children are heard and that somebody is doing something about it.

Now I am settled in. Before, when I was living in Port-au-Prince, I felt so disempowered. Now I feel empowered. I like when I have responsibility and can help women and children.

Someday I want to study international relations. I want to go to university. I want to travel. I want to be a humanitarian.

I still miss my auntie. I want to help her little son Michael Francois. He is only four years old. He is still in Port-au-Prince. He is sad right now. I want to give him the opportunity to go to school. I want to be a mother to him.

I shouldn't have made it  
But I did  
Because we do



PAKISTAN

*These girls are from the Bagh district of northern Pakistan. Their communities are still rebuilding after the massive earthquake that hit the region in 2005.*



*The earthquake in Haiti hit Ben Hanson hard. He lost a friend in the disaster, which sent him searching for a meaningful way to remember him and help the survivors. He found it in the generosity and creativity of his colleagues at Baker Tilly Virchow Krause, LLP, an accounting and advisory firm with offices across the U.S.*

I had a friend and classmate from Luther College who died in the earthquake in Haiti. Ben Larson was a youth pastor and a student, and he led part of the student ministry down at Luther. Everybody knew Ben.

He was in his second year of seminary school and was doing a month-long mission trip working at an orphanage in Haiti with his wife and cousin.

They were all together in the orphanage when it collapsed. His wife and cousin survived, but Ben died.

When that happened, I felt like I had to do something, and I didn't know what to do. I felt like, "I'm only one person. What can I do?"

“I'm only one person.  
What can I do?”

So I brought the idea to our managing partner here in Minneapolis, Jeff DeYoung, and asked if we could do a Jeans Day [where people pay to wear jeans to the office]. And I'm thinking, "OK, let's raise \$300 and write a check."

At the same time, [ARC Board Chair] John Gappa from Malt-O-Meal had reached out to a couple people here for support. So Jeff said, "Let's make this a much bigger deal. Let's set a \$25,000 goal. And, Ben, I want you to lead it across the firm." I said, "OK! We can do that. Let's give it a shot."

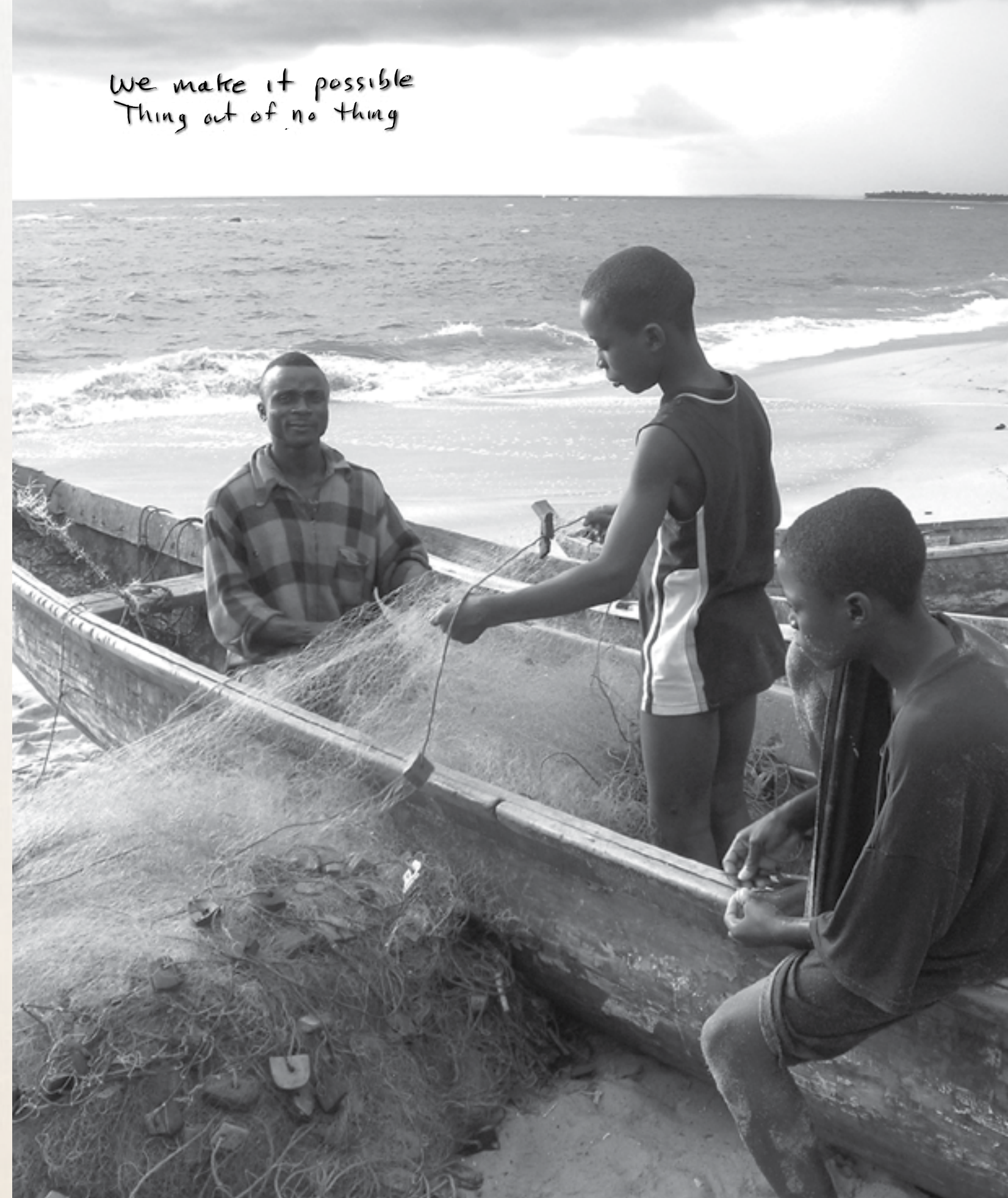
I asked the HR managers across the firm to coordinate a Jeans Day or other events to raise money. We also asked employees for donations.

Each location would do simple things, like pay \$5 to wear jeans, or have ice cream socials or sell root beer floats. Some had pizza donated from local vendors and then took donations for it. It was the employees who really drove this. All those small events — \$200 here, \$500 there — added up in a big way.

Somehow it added up to \$26,000. We wrote a big check to the American Refugee Committee and met our goal.

It was an awe-inspiring experience for me because I was able to do something good in memory of Ben and at the same time see this awesome power of the firm coming together to support such a great cause.

One of our core values is stewardship. And a lot of companies talk about values like that, but to actually see it put into action... I was just amazed and proud.



We make it possible  
Thing out of no thing



*Abdallah Majyambere is 30 years old, married, and has two children. A refugee from the Congo, he lives in Nyabiheke Camp in Rwanda. In 2008, he planted a small kitchen garden outside his shelter in the camp. Now, he teaches dozens of other refugees the micro-gardening techniques he has developed. Felix Ndangamiyumukiza, one of the community members Abdallah trained, says, "In the small space beside my house, I now have five sack gardens and four tire gardens. I also planted tomatoes in a small raised bed. I have become a hero in my area of the camp, and now my neighbors want me to teach them the same techniques that Abdallah taught me." What follows is Abdallah's story:*

It all started in 2008, when I planted a small kitchen garden outside my home. The staff of the American Refugee Committee noticed my garden and invited me to participate in a micro-gardening training. They taught me more about growing vegetables in very small spaces, by using sacks or old tires as containers for plants.

I decided to try out the ideas I learned. I found an old sack and got started. It worked! I was able to grow onions, chard, cabbage and amaranth greens.

To build these gardens, I start with two plastic sacks, one inside the other. I put soil and a small amount of manure inside. The middle of the sack has rocks in it so the water spreads out evenly. I plant vegetables in the top of the sack—and I also plant them in holes I cut on all sides of the sack. That way a lot of vegetables can grow in a small space.

In the camp, we get a weekly food ration from the United Nations – but that doesn't include vegetables. These gardens provided a free and constant supply of fresh vegetables for my family and something new to eat.

Soon, my neighbors were wondering how I did it and if I could help them do the same. I became a community mobilizer and started teaching others how to grow their own micro-gardens. I also grow seedlings and give them to other families who want to start their own gardens. Now my neighbors are building container gardens near their homes.

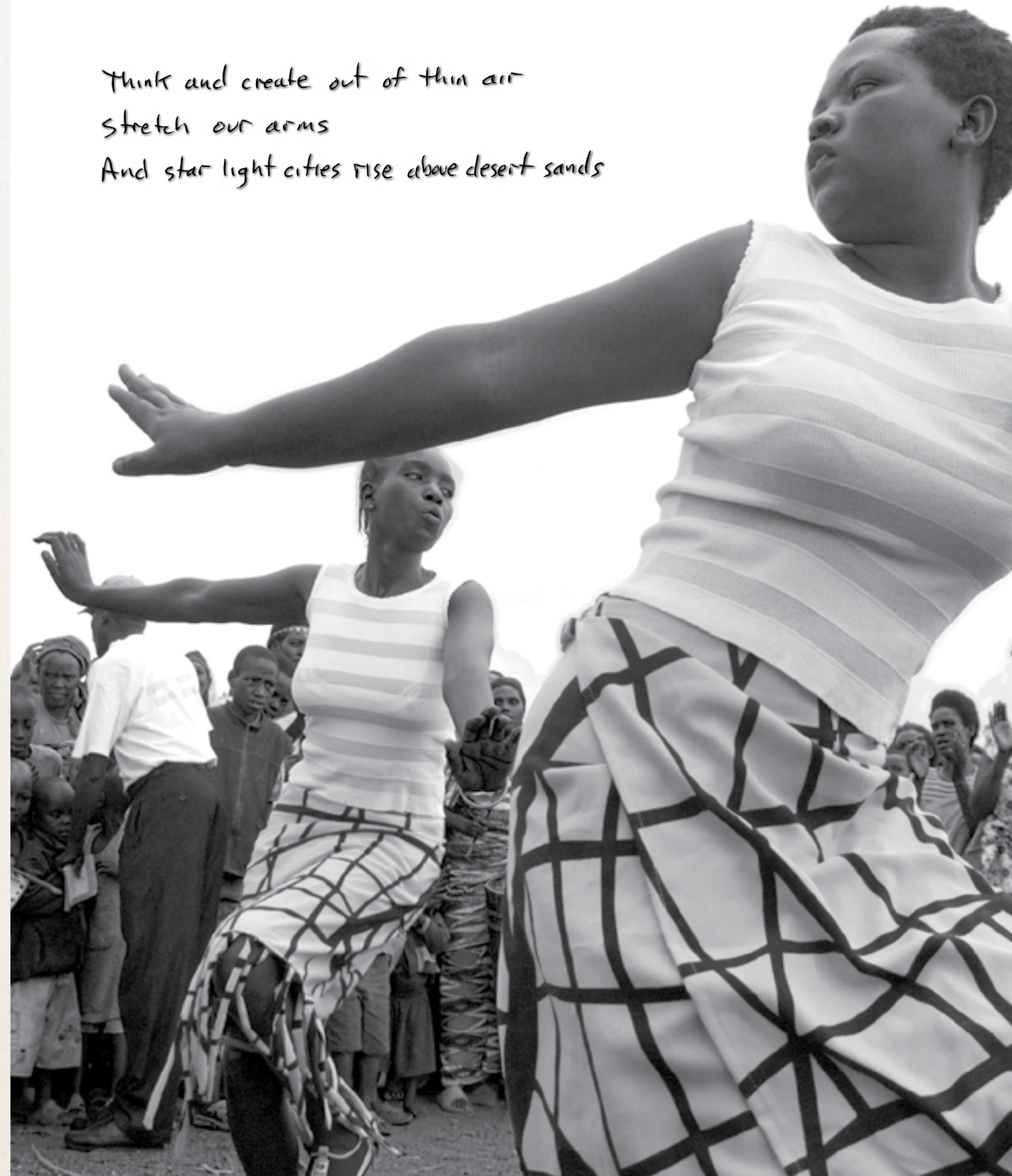
People tell me that they didn't think they had enough space by their homes for a garden. But once they saw my garden, they decided to try it, too. They also say they didn't know about amaranth—that it was a good-tasting vegetable, nutritious, and easy to grow.

More than 150 families here have their own gardens in Nyabiheke. By selling our extra vegetables in the local town, we can even earn money to buy clothing and other things we need. This may seem like something small, but it has really changed things around here.



“This may seem like something small, but it has really changed things around here.”

Think and create out of thin air  
stretch our arms  
And star light cities rise above desert sands



NYABIHEKE CAMP, RWANDA *Refugees perform a traditional Congolese dance as part of a community celebration.*





“...everything reminded me of what I went through. It helped me connect right away...”

*Dr. Ha Tuong fled Vietnam after the Fall of Saigon in 1975. He got out of the country on a fishing boat and eventually ended up on a Malaysian island beach with about 600 other refugees.*

For weeks, they were given food and water, but no shelter.

“It was a beautiful island, but we weren’t allowed to touch anything. So we just sat on the beach, under the coconut trees. We got rained on, we got dried up, day after day.”

One day some reporters snuck onto the island. Ha, who was the most fluent in English, passed them a message to give to the U.S., Canadian and French embassies on the mainland. Eventually, they were rescued, and Ha came to Minnesota. He got a job teaching English as a second language and later became an administrator for Minneapolis Public Schools, where he worked for over 30 years.

Now, he is part of a Vietnamese community group that regularly raises money for causes related to their native country. But when the earthquake happened in Haiti, Ha knew he had to take action.

“We were refugees before. So we said, ‘If we were able to come here and restart our life, it’s time for us to help others do the same thing.’”

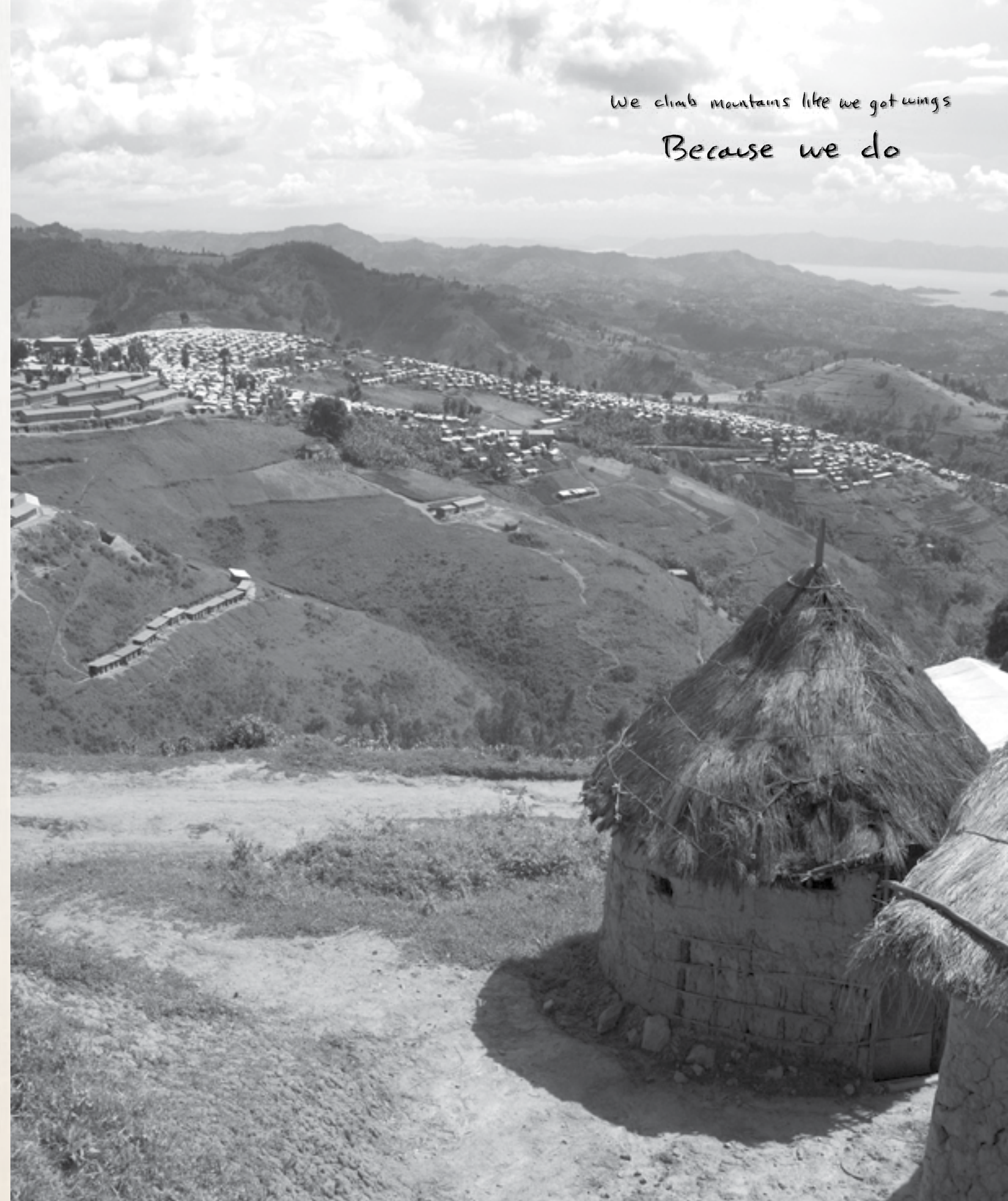
With the help of friends Huong Thu Hoang and Susan Dung Lien, Ha organized a fundraiser for Haiti earthquake relief at U Garden Restaurant in Minneapolis, with the proceeds going to the American Refugee Committee. They sold tickets to a dinner and asked for donations from individuals and local businesses.

At the event, Ha presented a slideshow juxtaposing photos of refugees fleeing Vietnam and photos of earthquake survivors in Haiti.

“When I looked at photos from Haiti, I saw people trying to evacuate from the harbor in Port-au-Prince. That struck me right away because I was at the harbor of Saigon [after the fall of the city]. The boats and then the camps — everything reminded me of what I went through. It helped me connect right away with the Haitians.

“Most of the Vietnamese in Minnesota are also boat people. I thought, ‘If it struck me by looking at those photos of Haitian refugees, it will strike them if they see the pictures of the camps, the makeshift tents and the collapses.’ We had those, too. Buildings collapsed. And then piles of bodies. When I escaped from Saigon, I saw bodies bulldozed together, like a mountain. A mass grave. They had no time to bury all of them. The same thing happened in Haiti.

“Those photos made people open their hearts. The response was overwhelming. We raised over \$20,000.”



We climb mountains like we got wings  
Because we do





*Hundreds of thousands of people fleeing the ongoing violence in Burma have found safety in refugee camps along the Thailand-Burma border. Many of the women and children living there have experienced physical and sexual violence on this journey. The American Refugee Committee started a program in the camps to help women who've experienced violence. Naw Nee Lah, a well-respected elder living in Nu Po Camp, provides support to women and girls. She shares her knowledge with other leaders so that everyone can take part in making their community a safer and more peaceful place.*

My name is Naw Nee Lah, and I am 60 years old. I come from a small village in Ye Township in Burma. In 1990, the Burmese

“ I have been happy to help and do whatever I can. ”

military came into our village. They took everything we had, our chickens, our pigs, our food...everything. And the military took most of the men from our village—including my husband—into forced labor. We, the women and children, were left to care for ourselves. I know many

women who were raped and beaten. The young girls often had to hide because soldiers would rape them.

When we finally fled the village, we could carry only a few food rations. I had seven children at that time to take care of. We had so little food. My 8-year-old son was so weak and sick. I could not find enough food to feed him. His body had no power left in it, and he died. But we had to keep walking.

In 2000, my family and I made it to Nu Po Refugee Camp in Thailand.

Even in this refugee camp where we were supposed to be safe, I could see that women and girls were being abused by men. So, I decided to join the Karen Women's Organization where I could help them. We offered safe houses where women could go if they were afraid.

Then, I started working with the American Refugee Committee in 2007 so that I could help women and girls even more. I have been happy to help and do whatever I can. Many young girls are raped, and some need help with feeling safe and getting justice after they have been abused. Many women have told me that they have learned a lot about where they can get help. I believe our work will help reduce the violence here.

Someday I hope that Burma will become peaceful, and then I will go back and continue working for women and children who need help.

We are more than a body  
More than flesh, bones and cartilage



SOUTHERN SUDAN

*Rose Tabu John works to prevent violence against women in southern Sudan. In 2009, she received the Mildred Leet Award in recognition of her work for women.*





*Lisa Ramsay grew up on a farm in a small town in northern Minnesota. Since then, she's traveled the world, but she still holds the values she learned in her childhood — that we are all connected and that it is important to help one's neighbor. She lives these values through her work as a volunteer for the American Refugee Committee and takes any chance she gets to pass them down to her children.*

“It is better to light one candle than to curse the darkness.”

“As my kids get older, I've realized that modeling is sometimes more important than anything you can say. I want to be able to teach my children that there's so much out there, and you're

not alone in this. We're all together. It's a global community. The one little thing that you do can make a huge difference somewhere else, whether you realize it or not.

I think when kids see their parents saying, “This is something I think is important, and I'm going to make the time to do this,” they take note. Especially with volunteering your time. Even kids can see, “It's not something Mom has to do. Why does she do this? Why is it so important?” And it's a good way to start the conversation about what is important in your life and how you want to live it.

The American Refugee Committee is an organization that I've always really believed in. I've been so impressed with its mission to help people take back control of their lives. And the commitment the American Refugee Committee makes to the long term, to the rebuilding of the economy, to encouraging gender equality. Those are such important things.

Sometimes you feel an individual can't have that much impact. But if many individuals with like minds come together, it's a movement. And when you have a movement of people with a passion for the same thing, you create action. Action is what is going to hold the key to the future of this world and for my kids' future. The world is only getting smaller, and everything is so interconnected.

One of my favorite quotes I like to give the kids is from Eleanor Roosevelt, who said, “It is better to light one candle than to curse the darkness.” And I really believe that. Because the truth is, our actions really do have consequences that extend so far beyond us and our environment. We may not realize it at this point, but they do. I have been honored to be a part of this movement.

I hope my words - in combination with my actions - are something that can set the example for my kids of what I think is important and how I want the world to be. And I hope they can learn from that.”

*We are the manifestation of a force  
That holds planets in orbit  
And stars from going dim*





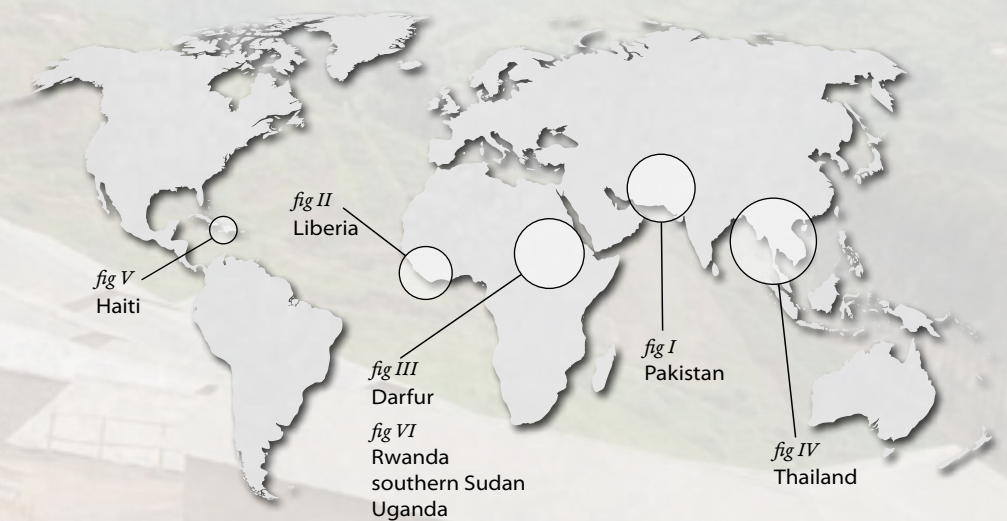
Our programs are made possible through partnerships with governmental and non-governmental organizations, including:

United States Agency for International Development (USAID)  
USAID Office of Foreign Disaster Assistance (OFDA)  
U.S. Dept. of State, Bureau of Population, Refugees and Migration (BPRM)  
United Nations High Commissioner for Refugees (UNHCR)



## Programs built from the ground up

People suffering during the most vulnerable times of their lives know better than anyone what they need. They let us know what needs to happen to make meaningful change in their communities, and we work together to make it so. Most commonly, people need health care or they want the opportunity to make a decent living for their families. On the following pages, you'll see how these people are working through the most challenging times they've seen. You'll get a snapshot of each of the different groups of people we're working with and how they're struggling to create a better future. Our partners are diverse, and so is the work we do. But it's all for the same goal – to help people take back control of their lives.



## The ways we work

- Agriculture & Food Security
- Camp Management
- Capacity Building & Training
- Community Development
- Community Health Education
- Community Reconciliation & Reintegration
- Disaster Preparedness
- Disease Prevention and Control
- Emergency Health Care
- Emergency Obstetrics
- Gender-based Violence Prevention & Response
- HIV/AIDS Prevention and Treatment
- Immunizations

- Income Generation
- Infectious Disease Prevention
- Legal Assistance
- Microenterprise Development
- Microfinance
- Mother and Child Health Care
- Primary Health Care
- Protection
- Psychosocial Support
- Rapid Emergency Response
- Refugee Return & Reintegration
- Reproductive Health Care
- Savings & Loan Associations
- Shelter Construction & Rehabilitation
- Small Business & Vocational Training



### Afghan Refugees in Pakistan

Camps are the only homes that some Afghan refugees have ever known. Children have been born – and have grown up – in refugee camps in Pakistan’s Balochistan Province, never knowing a true home.

Today, Afghan refugees are ensuring that the camps where they live are as healthy and safe as they can be. The refugee community has established health committees to build awareness of important health and hygiene messages in the camps. Refugees are getting training as health workers and birth attendants, so they can serve the needs of the camp community and whatever community they eventually call home. We work together to improve water and sanitation systems, and then the community maintains and monitors those systems.



### Earthquake Survivors in northern Pakistan

Survivors of a massive earthquake in 2005 continue dealing with the aftermath of the disaster and – quite literally – are still working to pick up the pieces. Communities in mountainous northern Pakistan were decimated and vital infrastructure wiped out.

The American Refugee Committee provided immediate emergency relief. But since the emergency phase ended, survivors have taken control of rebuilding. With our support and guidance, they’re restoring and improving their health and medical system.

Quake survivors are demanding better health care and holding one another to new standards. They’re ensuring that more women are able to deliver babies in health centers and that there are more birth attendants trained and present at these births. They’re reducing mortality rates by educating the community about what health services are available and communicating information about disease and hygiene. And they’re making sure that their health centers have water and sanitation systems that are safe and well-maintained.

### Pakistan – Communities Displaced by 2009 Fighting

Fighting between Taliban forces and the Pakistani government in northwest Pakistan forced thousands of families to flee their homes for other parts of the country in 2009. The people who fled struggled to stay healthy even as they lost all access to basic necessities.

We work to get them the essentials they need. Families who live in camps or with host families are able to get clean drinking water. We set up latrines and sanitation systems and promote hygiene practices to help people protect themselves from the breakout of disease. And families are able to access emergency and primary medical care at health clinics supported by the American Refugee Committee.



### Returnees and Communities in Liberia



fig II

During the country’s 14-year civil war, hundreds of thousands of people fled the country or relocated to safer areas in Liberia. Most have returned home. Communities, businesses and infrastructure have been damaged or destroyed. But, the legacy of the war for thousands of Liberian women and girls has perhaps been the most terrible.

Liberians don’t remember rape or gender violence being a big problem before the war. But during the war, women and girls were suddenly confronted with sexual and domestic violence they had never seen. Every woman knew someone who’d been a victim.

Now that they’ve returned home, Liberian women aren’t letting this violence define them or their country. They’re putting an end to it. First, they’re working to seek justice from their attackers in a court of law. Then, they turn their attention to society, to root out the behaviors and attitudes that allow violence to continue. Armed with video cameras and a little bit of training, women tell their stories of violence and bring together their communities to listen and do something. We’ve already measured a positive change in attitudes towards women and gender violence in Liberia.

Women are also leading the economic recovery in Liberia. In most families, women have become the primary breadwinners. Together, we’re making sure they have the tools to succeed. With some training and a small seed loan from Liberty Finance, our microfinance institution, Liberian women are building businesses that revitalize their communities. They’re able to care for their families and send their sons and daughters to school again.

### War-Affected Darfuris

Millions of Darfuris are living without enough of the most basic necessities, essentials like food or clean drinking water. Darfuris – many of whom are refugees in their own country – have lost their homes, farmland and sense of normalcy. Keeping schools running is next to impossible. Without the chance at an education, an entire generation of Darfuri youth face a difficult future.

Even under these impossible circumstances, the will of Darfuris for a better life shines through. Poor farming families, who often survive on just a small plot of land, refuse to give up. They know the fighting could come to their doorstep any day and force them to leave their homes and their crops. Still, they’re learning improved farming techniques and growing crops to help them provide food for their children.

After generations of struggling with preventable illness, communities in Darfur are taking control. Together, we work to dig wells and install water and sanitation systems. The Darfuris take ownership from there. Communities form water committees to maintain the systems and ensure that they’ll be a safe source of water for years to come. Darfuris also pursue training as midwives and health workers, so that their communities can care for themselves into the future.

The terrible conflict in Darfur makes it one of the most difficult places for humans to survive. But Darfuris refuse to let their lives stop just because of the fighting.



fig III





**Burmese Refugees and Migrant Workers**

Empowerment. It's an especially vital quality for refugees who have been robbed of their homes, dignity and self-confidence. On the Thai-Burma border, refugee camps provide shelter to people who were forced from their mountainous village homes by the military regime in Myanmar.

Within the safety and security of these camps, refugees can recover from the violent persecution they faced and are empowered to take back control of their lives. They receive proper medical care and education, gaining knowledge about how to prevent violence – or obtain assistance if they are victims. They learn business skills and develop income-generating projects. And refugees also have the opportunity to undergo training to become community health workers and empower others to stay healthy. The hope is that they can be contributing members of whatever community they eventually make their home.

The American Refugee Committee also provides assistance to economic migrants and host communities in Southern Thailand. Seeking a better way of life, migrants from Myanmar have relocated to Thailand in search of opportunity. Too often, they face additional challenges, such as lack of medical care and the knowledge to stay healthy. Through programs that screen and treat infectious diseases, these migrants are learning to guard against illness and maintain the well-being of their entire community.



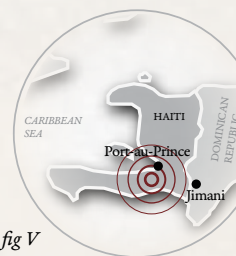
**Haitian Earthquake Survivors**

In January 2010, people around the world witnessed a crisis unfold before their eyes. A massive earthquake struck Haiti, bringing widespread death, destruction and despair. Many lost everything. People didn't have adequate food or clean water, let alone sturdy roofs over their heads. Stories of heartache flooded the media, and people across the globe were inspired to help make a difference.

With support from donors, the American Refugee Committee responded, providing access to medical care, emergency shelter, clean water, sanitary facilities, and other emergency assistance.

Haitians have emerged from the rubble and are beginning the slow process of rebuilding their country. Haitian work crews are taking the first step. They're clearing rubble, digging latrines and drainage ditches and improving the camps where they live. In exchange, they receive a daily wage that allows them to buy food and provide for their families. Soon they'll begin building transitional shelters that will house people for 3-5 years until permanent homes can be built.

It will take years to build new homes, buildings and infrastructure – and the future is uncertain. But, many Haitians see this as an opportunity and are hopeful that they can rebuild their country and then continue to grow.



**Returns and Communities in southern Sudan**

The people of southern Sudan watched helplessly as their country raced in the wrong direction in 2009. After a few years of peace, unwanted violence returned to their communities. About 2,000 were killed, and 400,000 people were forced from their homes.

But southern Sudanese refuse to let increasing uncertainty deny them the chance to rebuild. They're hungry for the ability to manage their own communities and problems. And, it's our role to help them learn the skills that will make that possible.

They're starting with health. Through training, health care workers learn to manage clinics and lab services. Doctors are gaining the skills to improve their care for women and babies and promote safe motherhood. Teachers and educators are learning how to prevent domestic violence and the spread of HIV/AIDS. They take that knowledge to their neighbors through community events, local radio programming and condom distributions that they plan.

Together, we drill new wells and put in water pumps. Water committees learn to maintain pumps and test water quality, and they teach their communities about hand washing and upkeep of latrines.

We play our part in the process of rebuilding, but it's the people who are driving real change in southern Sudan.



**Displaced Northern Ugandans**

For more than 20 years, the people of Northern Uganda were terrorized by violence and insecurity. They were forced into displaced person camps and robbed of the opportunity to provide food, shelter and health care for themselves. An entire generation grew up without a real understanding of 'home.' Since the situation stabilized in 2006, people have been returning to their homes. But things are not as they left them. Two decades have taken their toll, both on infrastructure and human relationships. In many ways, Northern Ugandans are starting over from scratch.

We're there to help Ugandans navigate their return home and to smooth the process of rebuilding communities. Together, we're tearing down dilapidated homes and latrines and reconstructing markets, wells, roads and buildings. Survivors of violence are seeking justice and support; neighbors are mending strained relationships. People are rebuilding their livelihoods to survive the shocks and strains that life and the world can throw at them, and we are there to help on a person-by-person basis.

We're also working together to help communities care for those with HIV/AIDS – and to stop the disease from taking any more lives.

The final goal? For community elders in Northern Uganda to watch a new generation grow up knowing nothing of life as a refugee.



**Congolese Refugees**

The bloody civil war in eastern Congo has caused suffering for millions of people. About 52,000 Congolese refugees are living in our camps in Rwanda. In their journey to escape, they've endured terrible abuse and hardship.

At our camps, they can feel secure as they recover from the most horrific outcomes of war, such as violence and HIV/AIDS as a result of rape. Pregnant mothers can finally get the kind of health care they need. Victims of rape or gender violence are healing and moving forward with the help of counseling and prevention programs. Children have the opportunity to attend school and further their education. And parents are able to learn new skills. They join with one another to form small savings and lending groups, rebuilding trust for their neighbors that might have been shaken in their struggle for safety.

These camps won't be their homes forever. But the skills and healing that Congolese refugees are able to achieve there will carry them well into the future. They want to return home, but continuing violence in Congo makes that impossible. When families are able to return home, they will be better equipped to handle life's many challenges...and seize the opportunities that lie ahead.



**Statement of Activities & Changes in Net Assets**  
December 31, 2009

**Revenue and Support** *(in dollars)*

Contributions and grants:	
Contributions	2,024,075
United Nations Grants	7,414,473
U.S. government Grants	17,162,246
Private support contributions	3,559,253
Micro-credit interest and fees	1,121,256
Interest and investment income	33,855
Other income	33,300
<b>Total revenue and support</b>	<b><u>31,348,458</u></b>

**Expenses** *(in dollars)*

Program services:	
International programs	25,505,742
Supporting services:	
General and administrative	2,191,294
Fundraising	541,078
Total Supporting Services	2,732,372
<b>Total Expenses</b>	<b><u>28,238,114</u></b>

**Changes in Net Assets** **1,880,774**

**Net Assets at beginning of year, as restated** **18,085,935**

**Net Assets at End of Year** **19,966,679**

**Statement of Financial Position**  
December 31, 2009

**Assets** *(in dollars)*

<b>Assets</b>	
Cash:	
Headquarters Cash	1,563,075
Overseas Cash	1,255,236
<b>Total Cash</b>	<b>2,818,311</b>
Investments	576,969
Grants receivable	17,303,681
Other receivables	1,048,720
Pledges receivable	94,174
Micro-credit loans receivable	524,709
Prepaid expenses	352,015
Equipment and vehicles, net of accumulated depreciation Of \$299,633	324,174
<b>Total Assets</b>	<b><u>23,042,753</u></b>

**Liabilities and Net Assets** *(in dollars)*

<b>Liabilities</b>	
Line of Credit	241,564
Accounts payable	1,007,527
Grants payable	519,509
Accrued salaries and benefits	567,207
Micro-credit loans payable	740,267
<b>Total Liabilities</b>	<b><u>3,076,074</u></b>

<b>Net Assets</b>	
Unrestricted	1,648,793
Temporarily restricted	<u>17,482,131</u>
Permanently restricted	835,755
<b>Total Net Assets</b>	<b><u>19,966,679</u></b>

**Total Liabilities and Net Assets** **23,042,753**



## 2009 Financial Statement

Financial responsibility is always a top priority for the American Refugee Committee. We work as efficiently and effectively as possible in addressing the needs of refugees.

These statements were audited by Gelman, Rosenberg & Freedman, Certified Public Accountants



## 2010 Board of Directors

Neal Ball  
Founder and Honorary Chair

John Gappa  
Chair

Walda Roseman  
Vice Chair

Michael McCormick  
Secretary

Carol Winslow  
Treasurer

Peter Bell  
Bernard Benson

Ben Boyum  
Susan M. Briggs

David Duclos  
Stephanie Farshat

Walter B. Franz III

Mel Goldfein  
Anne Goldfeld

Sheila Leatherman

Mark Lindberg

Svjetlana Madzar

Holly Myers

Douglas Penman

Tracy Poe

Holly Robbins

Jim Rustad

Jay Shahidi

Perry Witkin

**We thank these recent  
former board members  
for their service:**

James Small

Jeanne Sullivan

Mary Tjosvold

## Senior Management Team

Daniel Wordsworth  
President/CEO

Lisa Butenhoff  
Country Director, southern Sudan

Top Cheikh  
Interim Country Director, Rwanda

Edgarh Cosic  
Country Director, Pakistan

Gary Dahl  
Country Director, Thailand

Oury Diallo  
Director of International Finance

Sarah Hartman  
Director of Development & Communications

Carrie Hasselback  
Country Director, Liberia

Eric James  
Director of Program Development

Emmanuel Kailie  
Country Director, Darfur

Sylvie Louchez  
Country Director, Haiti

Brent Potts  
Country Director, Uganda

Vince Sanfuentes  
Director of Government Affairs

Colleen Striegel  
Director of Human Resources & Administration

Mark White  
Director of Finance and Accounting

Tyler Zabriskie  
Senior Vice President, International Programs

Mike Zeitouny  
Chief Financial Officer

We welcome the opportunity to meet and talk with you.

Go to [www.ARCrelief.org/whatcanIdo](http://www.ARCrelief.org/whatcanIdo). Tell us how you want to be involved in making the world a better place. If you share your ideas, we can work together to create the opportunities you're looking for to get involved.

## Engage in a new way.

This is the time to join us and engage in a whole new way. We're reinventing the way we do business. Tell us how you want to engage. Tell us what would be most meaningful to you.

Bring your energy and ideas, and we'll support you as you make your ideas reality.

Think about it (or maybe you already have). The potential is truly awesome. The American Refugee Committee is and always has been only as strong as the people who contribute – donors, volunteers, staff, and partners.

Now imagine that we reorganize to truly harness the talent and drive of all of these actors in a new way. What would happen?

# You tell us.

Call:

**(800) 875-7060**

to speak with an Engagement Officer

Email:

**whatcanido@ARChq.org**

Visit us:

American Refugee Committee  
430 Oak Grove Street, Suite 204  
Minneapolis, MN 55403, USA

[www.ARCrelief.org](http://www.ARCrelief.org)



Bagh	Juba	Nimule
Bangkok	Kakata	Nyala
Byumba	Kajo Keji	Port-au-Prince
Chicago	Kampala	Quetta
Chumporn	Khartoum	Ranong
Fond Parisien	Kibuye	Sangklaburi
Ganta	Kigali	Swabi
Gbarnga	Magwi	Umphang
Gereida	Malakal	Voinjama
Gituza	Mardan	Washington
Gulu	Minneapolis	Yei
Islamabad	Monrovia	

[www.ARCrelief.org](http://www.ARCrelief.org)





# You make it possible

You give another person the chance to begin again. With the incredible power that each of us holds, we can make things happen. Acting together, we can make the world a better place for everyone who lives in it.



**\$100,000 +**  
Lars Bader Charitable Trust  
Open Society Institute and  
Soros Foundation network

**\$50,000 +**  
Blue Oak Foundation / Holly  
Myers & Kirk Neely  
I.A. O’Shaughnessy  
Foundation  
Jeanne M. Sullivan

**\$20,000 +**  
Cornwell Family Fund of The  
Minneapolis Foundation /  
Joan & Ronald Cornwell  
Frankel Family Foundation  
Marcus McCoy Foundation  
Cissy Patterson Foundation  
The Hilary J. Smith Charitable  
Lead Annuity Trust  
Sundance Family Foundation

**\$10,000 +**  
Teresa & RJ Devick  
J. Peter Dowd & Marcia  
Dowd  
David L. & Johanna C. Duclos  
Fund of The Minneapolis  
Foundation  
Jay & Peggy Halvorson  
Katherine M. Helgerson  
JPC Foundation / John  
Cusack  
Leatherman Family Fund  
of The Minneapolis  
Foundation / Sheila &  
James Leatherman  
Mark D. Murphy  
Steven J. Patti & Katy  
Gasparini  
Quail Roost Foundation /  
Kerry Heubeck  
Stephen & Cynthia Shevlin  
Mary M. Tjosvold, Ph.D.  
Carol D. Winslow

**\$5,000 +**  
Jim & Julia Adams  
Neal Ball Charitable Fund of  
The Chicago Community  
Trust  
Bernie Benson  
Best Buy Co., Inc  
Jane M. Black  
Susan M. Briggs, M.D.,  
M.P.H., FACS  
CompuLink  
Julie Corty & Richard  
Erickson Family Fund  
of The Minneapolis  
Foundation  
Darfur Awareness Now Group  
- Roseville Area High  
School

Dave and Jodi Dent Family  
Fund of The Minneapolis  
Foundation  
Paul C. Erdahl & Elizabeth  
Olson Erdahl  
Richard & Mary Erickson  
Kevin Filter & Rosemary  
Kessler  
Barbara L. Forster & Lawrence  
Hendrickson  
Bud & Mimi Frankel  
Andrew Gaspard & Nina  
Ingalls  
Alfred & Ingrid Lenz  
Harrison  
Hawkins Family Foundation /  
Blanche & Thane Hawkins  
Hays Companies  
Dawn L. & David J. Hill  
David and Shirley Hubers  
Family Fund of The  
Minneapolis Foundation  
Kohnstamm Communications  
Joshua G. & Ricka R.  
Kohnstamm  
Lutz M. Latta  
Laura Liu & Ken Pomerantz  
Maple Grove Senior High  
School, Maple Grove MN  
The Medtronic Foundation  
David & Nancy Michael  
Dan & Mary Moore  
Ronald & Linda Ott  
Keith J. Patti & Susan J. Haas  
Uzma Ramzan  
Holly M. Robbins  
Anne & Leland Salisbury  
Matthew K. Spector & Lisa  
Griffin Vincent  
Charles Stuebe Trust  
Mary H. Waite Fund of The  
Chicago Community  
Foundation  
Carl & Betsy Waters  
Watson Family Fund of The  
Minneapolis Foundation /  
Mary & Stephen Watson  
Witkin Family Philanthropic  
Fund / Cindy & Perry  
Witkin

**\$2,500 +**  
Michael Albert  
Bruce Allen  
Jean K. Andrews  
Deren Bader & Paul Lyons  
Joanne & George Baker  
Baker Hughes Foundation  
Charles & Jean Barnett Fund  
Sandy Beddor  
Bell Family Charitable Gift  
Fund / Peter Bell  
Bergren Family Foundation /  
Helen & Gary Bergren  
The Bible Family Fund /  
Christine & Hal Bible

Maury D. Bramson  
Dottie Brown & Jim Thomas  
David Cooper  
Faegre & Benson LLP  
Stephanie G. & Steve Farsht  
John & Suzanne Gappa  
Robert H. Graham  
Rehael Fund - Roger  
Hale/Nor Hall of The  
Minneapolis Foundation  
Gay Harwin  
Daniel & Mary Healy  
Mary Ruth Hotz  
Shawn Kearney  
Jeanne W. Kenny  
Mr. & Mrs. Desmond La  
Place  
Jeffrey D. Leppink & Jane  
Freeman  
Matthew J. Lerner  
Nancy A. Loewe & Pierre M.  
Loewe, The Loewe Family  
Trust

Patrick & Judith Mandile  
Dennis M. Mathisen  
Wynne Mattila & David  
Crisman  
Teresa McPherson  
Susan J. Metoxen  
Cindy & Jim Murphy  
Robert M. Nevitt & Donna  
M. Portner  
Northern Capital Insurance  
Group  
Howard Pfeifer  
Tracy Poe  
Donald & Marion Ravell  
Jim Rustad  
Polly Samardich  
John G. & Lois Schrantz  
Welshons Fund of The  
Saint Paul Foundation /  
Lois & John Welshons  
Matthew Shucker  
Rudolf F. Smets  
Bonnie & Craig Sommerville  
Rachel & Brian Sperrazza  
THS Multimedia, LLC  
Vargo Family Charitable Fund  
/ Paul Vargo, M.D. & Amy  
Vargo  
Jerry & Sonja Wenger  
Robert T. & Eugenia White  
Sally D. Woodhouse

**\$1,500 +**  
John & Helen S. Ackerman  
Terrence M. Anderson  
Solida & G. Delbert Antwiler  
Ruth & Ted Arneson  
Michael Baer  
Robert & Amy Barker  
Foundation / Brian Barker  
& Amy Barker-Wilson  
Joseph & Mary Bianco

John & Martha Bordwell  
Matthew Bracken  
William & Margaret Bracken  
The Brackenridge Foundation  
/ Barbara Brackenridge  
Anne Bridges  
Judith P. Brody & Bruce  
Farber  
Claudia L. Bruber  
Sonia & John Cairns  
Margaret M. Curtin & James  
Wilder  
The Dorsey & Whitney  
Foundation  
Charles Elkan & Janet Friday  
William Frederick Flood  
Patrice Hedlund & Ennis  
Arntson  
Linda L. Houden & Jerry Van  
Amerongen  
The Audrey & Sydney Irmas  
Charitable Foundation  
Cindy J. Kaiser & Cathy A.  
Fejes  
Norman A. Katz, in memory  
of Charlotte Wagemans  
Jaeson & Lisa Keown  
Dr. John Kersey & Mrs. Anne  
Kersey  
Michael R. King  
Marilyn K. Knieriemen  
Knopf Family Fund of The  
Minneapolis Foundation /  
Amy Knopf  
Julia L. Kretzer  
Lake Harriet United  
Methodist  
Tim Larsen  
Pamela & Charles LaRue  
Lesley & Brent Longval  
Brenda & Warren McGuire  
Linda & James Milow  
Myers Foundation  
Philip and Katherine Nason  
Fund of The Saint Paul  
Foundation / Polly &  
Robert McCrea  
Gerald S. O’Loughlin  
Suzanne & Richard Pepin, Jr.  
Dick Perrine  
Bonnie S. Peters  
Norberto E. & Ana M. Priu  
Jay & Kay Proops  
R.O.M.P. Family Fund of The  
Central MN Community  
Foundation  
Beverly J. and John A.  
Rollwagen Fund of The  
Minneapolis Foundation  
Mary Schissel Memorial Fund  
/ Patricia Anfinson  
Nicholas L. Schmidt &  
Felecia Schmidt  
Mary S. & Bruce H. Sielaff  
Dr. James & Anayansie Small

Spertus Institute of Jewish  
Studies  
Daniel D. Stone  
Jill & J. D. Thoreson  
Michael and Gloria Thurmes  
Charitable Fund  
Janet Velasco  
Mary M. Wahlstrand & Mark  
A. Bohnhorst  
Daniel & Dena Weis

**\$1,000 +**  
Mary Adams & Harold  
Ritscher  
ADC Foundation / Leann &  
William Linder-Scholer  
Dorothee & Alfred Aeppli  
Mark V. Anderson & Sysliene  
S. Turpin  
Ankeny Foundation  
Usman Azam  
Katharine J. Bar  
Gene C. & Margaret A. Bard  
Charles E. & Christina M.  
Bascom  
Marybeth Bauries  
Harley E. & Verna W. Bergren  
Michael Boring  
The Ward and Kris Brehm  
Fund  
Peter A. & Maura F. Brew  
Michael Brunette  
Krzysztof Burhardt, Ph.D. &  
April Spas  
Ken & Crystal Burns  
John Butenhoff, Ph.D. &  
Bonnie Butenhoff  
Robert H. Carlson PA-C &  
Gregg S. Larson  
Rebecca & Derek Christian  
David & Margaret Cochrane  
Cox Family Fund / David &  
Vicki Cox  
Ted & Carol Cushmore  
Daniel J. Dalnekoff & Ilana  
Reiss  
John & Dianne Daly  
Gregory & Janice Dames  
Michael & Michelle Dempsey  
Harold L. Dolan, III  
Maria & Jeffrey Dols  
Dorsey & Whitney LLP  
Robert & Catherine Dunlap  
Chad N. Erickson  
Daniel & Carol Everson  
Mary B. Faris  
James R. Flink & Diane  
Uecker-Flink  
Grayce A. Flom  
Carol Gales  
Jerome & Shirley Gerlach  
Patricia D. Gertz  
Ray H. Goetz  
Melvin & Judith Goldfein

# 20 Year Donors

For more than 20 years,  
these generous people  
have supported  
refugees and disaster  
survivors. The enduring  
commitment of each  
has changed the  
course of people’s lives  
in a real and lasting  
way. They are truly an  
inspiration.

Donna L. Abert  
Dorothee & Alfred Aeppli  
Joyce K. Allen  
Karen & James A. Allen  
Patricia K. Anderson  
Arlene K. Baker  
Neal Ball  
Ruth J. & Victor F. Barela  
Harold A. Behnken  
Annette M. Belfiori  
Sandra & Saul Benzeev  
Joyce Miller Biagini  
Wayne & Jean Binfet  
Dr. Thomas G. Birkey  
Lynn & Jean Blaylock  
Catherine Bonnard & Tom Sullivan  
John & Martha Bordwell  
E.J.W. & Trudi S. Bowie  
Brad J. & Catherine Paige Brainard  
Maury D. Bramson  
Doralee & Harold Broxey  
Terrance M. Brueck  
Sonia & John Cairns  
Constance M. & William W. Cameron  
Mousa Carpenter  
Millie & Paul Caspersen  
Iola E. Christopherson  
Richard G. & Marsha L. Cohn  
William & Janet Conley  
David & Jeanne Cornish  
Laura & John Crosby  
John & Karen Crotty  
Ella Marie Dammann  
Merrill L. & Jane Davis  
Susan & Conrad De Jong  
Cornelia C. & Gerald R. DeLand  
Charles M. & Carol E. Denny  
Daniel E. Doll  
Fredericka T. Durant  
Janet & French Eason  
Carole Y. Erickson  
Jeanine & Charles Evenson  
Gary & Jane Filerman  
Linda & Robert Fisher  
Marjorie A. Forshtay  
Barbara L. Forster & Lawrence  
Hendrickson  
Bud & Mimi Frankel  
Mabel E. Frankenstein  
Richard E. & Marjorie Friedman  
Mary & Dale Gerding  
Patricia D. Gertz  
Gerard & Sandra Gix

Dr. Mace Goldfarb  
Melvin & Judith Goldfein  
Carol & Fred Green  
Deborah Hadas & Robert Hanson  
Jacqueline K. & Charles D. Hamblin  
Carol A. & Howard B. Hanson  
Basavaraj K. Haralenne  
Kent & Judith Harbison  
Alfred & Ingrid Lenz Harrison  
Richard C. & Carol J. Harruff  
Claire K. Hartley  
Ruth L. Hass  
James F. & Cathie Hatch  
Philip Hatcher & Margareth Kieschnick  
Howard & Nicole Haugh  
Peter Hawkins, Jr. & Katherine Hawkins  
Ailys L. Henningson  
Mary E. Hill  
Donald & Suzanne Hofstrand  
Kathleen Hollander & Rodney Johnson  
Nora & Wayne Hornicek  
Joanne T. Hostert  
Joyce & Robert Humboldt  
Barbara & Gregory Huwe  
Jean & Robert Jacobson  
Mary Sue & Blair Jenness  
James P. Johnson  
Drs. Sally & Charles Jorgensen  
Diane E. & Thomas J. Judge  
Mary F. Kading  
Jean O. Kaelber  
Sheldon Kimmel  
Knopf Family Fund of The Minneapolis  
Foundation / Amy Knopf  
John & Julie Koehler  
James J. Kramer  
Sheldon & Delores Levin  
Renee Logan  
Margaret A. Lynch  
Janis L. Lysen  
Margaret E. Mackallor  
Catherine M. Marien  
Joan P. & William McTeer  
Laura H. & James G. Miles  
Patricia Miskell  
Jaime & Anna Moreno  
Peter & Karla Myers  
Thomas E. & Patoomtip Nagle  
Kenneth E. & Carolyn C. Nopar  
Mary E. O’Connor  
Mary Ann Ogden  
Leonard Oppenheimer & Lydia Schultz  
Ronald & Linda Ott

Irene Palm  
Phyllis & Edgar Pears  
Jonathan Perman & Melissa Hilton  
Lorraine & Norman Perman  
Bonnie S. Peters  
Jeffrey F. Peterson  
Ann & Felix Phillips  
Mary Breen Pieh & Timothy Pieh  
Sally B. Polk  
Mr. John S. Reinhardt & Ms. Angela  
Vargas  
Patrick K. & Pamela L. Riley  
Donald K. Rockenbach  
Rosemary Rockwell  
George A. Rosenfeld  
Brynild Rowberg  
Ruth M. Saari  
Anne & Leland Salisbury  
Marcella E. Schneider  
Judy & Anthony A. Schumacher  
Lyall A. & Inez M. Schwarzkopf  
Marguerite E. Seflow  
Glenn W. & Sue Shifflet  
Harriet S. Siegel  
Susan & Richard Skare  
Stephen E. Smaczarz  
Patricia & Prachuab Soonthornprapuet  
Todd N. Sorlie  
Mary & Richard Steege  
Mary & Max Steininger  
Susan & John Streitz  
Jeanne M. Sullivan  
Marjorie J. Tarr  
Renee Tasaka  
Carol A. Tauer  
Patricia Thomas  
Jill & J. D. Thoreson  
Paul & JoAnne Tierney  
Ellen Toll  
Susan Toth & James Stageberg  
Emily Anne & Gedney Tuttle  
Mary C. Van Evera  
Joanne & Philip Von Blon  
Lesley & Rodney Walz  
Mary & Stephen Watson  
John C. Weaver, Jr., MD  
Lois & John Welshons  
Paul & Janice Wicklund  
Martha Wiggins  
Bruce C. Winslow  
Carol D. Winslow  
Ms. Ruth D. Woods  
Ann & Gary Wynia



Elly & Bob Gordman  
 Harvey & Cynthia Haines  
 Elayne R. & Kenneth Hengler  
 Nancy Hough  
 Karla Hult & Gary Frenkel  
 Humboldt Family Foundation / Joyce & Robert Humboldt  
 Linda A. Hunter  
 Gary W. Jarrett  
 Mary Sue & Blair Jenness  
 Beverly G. Johnson  
 George & Susan Johnson Family Gift Fund  
 Valen E. & Pam Johnson  
 Martin R. & Carla Kaatz  
 Patrick Keene  
 Susan S. Kirkland  
 Victoria Kluge  
 Christa J. Knudsen  
 Nancy & Don Konopka  
 Steven & Kathleen Kraemer  
 Ingrid A. Liss  
 Rachel Logie  
 Christina A. Lopez  
 Paula Lott  
 Deborah & Vincent Louwagie  
 Christopher J. Ludewig  
 Tracy J. Luke  
 Leland T. Lynch and Terry Saario Fund of The Minneapolis Foundation  
 Margery H. Martin  
 Karla & Russ Materna-Reit  
 Peter C. Matthes  
 Katherine M. Merrill  
 Virginia T. & Duffy G. Miller  
 Mary M. Mohr  
 Anne & Kenneth Morrell  
 Christopher & Leslie Neugent  
 Jane Newman & Amy Lange  
 William L. and Josephine D. Nunn Charitable Foundation  
 Robert J. O'Connell  
 Brian O'Sullivan  
 Art & Jane Otto  
 Terri & Mark Palmquist  
 Dr. David & Mary Parker  
 Edward A. Parson & Jill R. Horwitz  
 Thomas & Virginia Paulick  
 Theodore Pauly  
 John E. Plastino & Gayle Materna  
 Grace Rapinchuk Charitable Foundation, Inc  
 The Reiger Fund / Dale Reiger  
 David W. Reinhold  
 Betsy D. Reitan  
 Carol S. & David A. Reitz Fund  
 Walda Wanger Roseman

Margaret T. Schmidt  
 Rob & Chrys Schmults  
 Mary Shamrock  
 Sameer Shamsuddin  
 Daisy E. Shenholm  
 Madeline Simon  
 Albert and Lillian Small Foundation  
 Barbara & Richard Smith  
 William D. Spring, Jr.  
 Michael R. Stedman Foundation / Stephen & Susan Stedman  
 Streicker & Company Inc.  
 Susan & John Streitz  
 John & Nancy Strom  
 Gilbert & Susan O. Tauck  
 Lynn & Carol Truesdell  
 Darla Dee Turlington Charitable Foundation / Darla D. & R. Donald Turlington  
 Danielle Turpen  
 Star Vankriedt  
 Steve & Kathy Vaughan  
 Philip & Joanne Von Blon  
 Clyde Watson & Dennis Devlin  
 Robert & Valerie Weiss  
 Ambassador Benson K. & Mary F. Whitney  
 Paul & Janice Wicklund  
 Anne Wilson & Michael Mondress  
 Daniel Wordsworth & Sandra Partridge  
 Xcel Energy Foundation

**\$500 +**

Esam & Paula Aal  
 Ben Adams  
 James A. Aiken  
 Joyce K. Allen  
 Gregory & Diane Amer  
 Mary Anne Anderson  
 Sandra A. Antonelli  
 The Dennis and Jacquelyn Aron Fund  
 Thomas Badow & Cynthia C. Unowsky  
 Dave & Carla Bahls  
 Ana A. Banos  
 Therese E. Barringer  
 Susan Barrows  
 Sally & Richard Bartley  
 Ralph W. Beha  
 Carolyn & Alex Bell  
 Naiff & Jessica Bethoney  
 Joyce Miller Biagini  
 Ronald Bienkowski  
 Marilyn J. & William P. Bieren  
 Barbara & Doug Birkholz  
 Kristine Bisanz

Bituminous Roadways, Inc.  
 Leslie Black Sullivan & Tom Sullivan  
 Les Bodian  
 Maggie Brahm  
 Brad J. & Catherine Paige Brainard  
 Kate & Mike Burke  
 M. Nicholas Burke, M.D. & Susan Slattery-Burke  
 Elizabeth Byrne & A. Chase Turner  
 Wilma M. Carling  
 Glenna L. Case  
 Joel & Marianne Charny  
 Shevlin & Diane Ciral  
 Catherine Collins  
 William & Janet Conley  
 James E. Cooke  
 Lucia M. & Gary T. Copland  
 Margaret P. Cost through The Charles Piper Cost Foundation  
 Jeremy W. & Bonnie Cram  
 Kori & Dr. Albert Crook  
 Karen & John Crotty Foundation  
 Susan Crow & William Metz, Jr.  
 Tom Cytron-Hysom  
 Tom Daggett  
 Meinrad & Ramona Daleiden  
 Gail Dekker  
 DeLand Family Fund of The Community Foundation of Western North Carolina / Cornelia & Gerald DeLand  
 Denny Fund of The Minneapolis Foundation / Charles M. & Carol E. Denny  
 Anthony N. DeRado  
 Christine & James Doody  
 Shirley A. Drechsel & Wayne Vaughn  
 Fredericka T. Durant  
 Mait Edey  
 Caroline Ellis  
 Brad P. Engdahl & Patricia L. Layton  
 Kay & Gerald Erickson  
 William Everett  
 Nancy L. Evert  
 Wollan and Fan Family Fund of The Minneapolis Foundation / Albert & Susan Fan  
 Eugene & Alice Faulds  
 Anne & Charles Ferrell  
 Gary & Jane Filerman  
 Stephen L. & Sarita T. Finnie  
 Allen P. Fisher  
 Jack and Stephanie Flynn Fund  
 Joan Fournier  
 Eric K. France & Judith C. Stein

James A. Frederick  
 Paul J. & E. Clare Friedman  
 Linda & Gary Gardner  
 Joni L. Giese  
 Jason Gillman  
 Sarah & Michael Goar  
 Lynne E. Gorlinsky  
 Samuel & Grace Gorlitz Foundation  
 Gail Gorlitz & Cris Smith  
 Paula Gorlitz & Steven Zuckerman  
 Maria Halmo  
 Roger & Terri Hanson  
 Barbara & Carl Harcourt  
 George E. Harding  
 Sally S. & Robert D. Hart  
 Sarah Hartman & Michael Hay  
 Robert & Justine Haselow  
 Philip Hatcher & Margareth Kieschnick  
 Howard & Nicole Haugh  
 Margaret Havemeier  
 Susan & Grant Hawthorne  
 Michele Hedlund  
 Robert & Judith Helmes  
 Joseph & Mary Herring  
 Emily & Charles Herrmann  
 Garth Heutel  
 John E. Hickok  
 Kevin & Cristina Hiddleston  
 Richard L. Higgins  
 Sharon & Tim Hill  
 Jim Hinman  
 Jennifer & Kenneth Holte  
 Nancy Hopf  
 Nora & Wayne Hornicek  
 Libby S. Hummer  
 John G. Ingram  
 Tom Ingram  
 Thomas Inukai Fund  
 Linda C. Ireland & Susan L. Gillman  
 Kathryn J. Iverson & M. Michael Menzel  
 Armando Izaguirre, Jr.  
 Wajid Jafri  
 Anne W. Jagunich  
 James A. Jenkins  
 Wayne B. Jennings & Joan Sorenson  
 Irene A. Jensen  
 Thomas R. Joyce & Annette M. Atkins  
 Jeff & Pat Karp  
 Douglas & Phyllis Kedl  
 Thomas & Shirley Keegan  
 Karen L. Kellow & Frank B. Cummings  
 Amelia Kendall & Christopher Lambe  
 Robert F. Kennedy Memorial  
 Marguerite Kirkby

Victor & Kathy Klimoski  
 Jimmy & Jane Kline  
 Beverly & William Knudsen  
 Richard & Barb Kraft  
 Deborah Krell-Schindler  
 Laird Norton Family Fund / Margaret L. Gunther  
 Lynn & Daniel Langmeyer  
 Deanne W. Larin  
 Joe A. LaRocca  
 Clara Le  
 John & Vicky Lettmann  
 Mark Lindberg  
 Charles Lodge & Kathryn Leitch  
 Renee Logan Foundation  
 Jadwiga Lopez-Majano  
 Christiane A. Ludescher-Furth  
 Gretchen R. Lyman Amis & Robert W. Amis  
 Margaret A. Lynch  
 Janis L. Lysen  
 Jeanne & Tom Maddox  
 Svjetlana Madzar  
 Victoria F. Mahoney  
 Teresa Marshall  
 Jeremy Matz  
 Annette Matzner  
 Tami Maus  
 William O. Maxwell  
 Robert W. & Eleanor M. McAllister  
 Michael McCormick & Helena Pohlandt-McCormick  
 Jeanne M. & Charles McCurdy  
 Nancy A. McDaniel  
 Mr. & Mrs. John McGourthy, Sr.  
 Dr. John McGurl  
 Michelle McKinney  
 Donald L. Mehr  
 Thomas & Danalee Merrill  
 Elizabeth Metzen & Joseph Peterson  
 Margaret E. Meyer  
 Tim Miley, M.D. & Mary Miley, M.D.  
 Dana C. Miller  
 Beverly & Avelino Mills-Novoa  
 John & Mary Moriarty  
 Marcia D. Mulhausen  
 New York State United Teachers Disaster Relief Fund  
 Matthew & Nancy Nordeen  
 Maren & Stephan Nowicki  
 Jean H. Nudell  
 Lisbeth J. Nudell  
 Georgia M. O'Brien  
 Mary Beth & Timothy R. Ocacek

# Month After Month

Donors who give each and every month, make it possible to provide immediate support to people with no place else to turn. When a disaster occurs, disaster response teams can mobilize right away knowing that monthly donors are there to back us up.

Esam & Paula Aal  
 Mary Adams & Harold Ritscher  
 Phyllis J. Adams  
 Mark & Mary Adorney  
 Rudolph A. Agosti  
 Maudella & Don Albright  
 Bruce Allen  
 Nancy & Stew Andrews  
 Sigrid A. Bachmann  
 Timothy Bailen  
 Ana A. Banos  
 Earl W. Bartlett  
 Dwight Baxter  
 Sharon & Richard Blumenthal  
 Terry W. & Eunice Boehlke  
 David R. Boulware  
 Jan Braeunig  
 Maggie Brahm  
 Eileen Brenner  
 Deborah E. Bullock  
 Diane E. Bundlie  
 Jessica A. Carlson  
 Daniel C. Casar  
 Deborah Case  
 Dr. Jessalyne L. Charles  
 Catherine Collins  
 Megan G. & Terry Cooper  
 Barbara A. Davidson  
 Katherine & Gregory Dehler  
 Leah D. & Kenneth E. Dick  
 Kristine Dimassis  
 Robert J. Donnelly & Nancy P. Koo  
 Anne Dorweiler  
 Robert Elhai  
 Gary & Jane Filerman  
 Susan Fink & Tim McCall  
 William J. & Michelle M. Fisch  
 William Frederick Flood  
 Joan Fournier  
 Carol Gales  
 Gina Gamage  
 Sieglinde Gassman  
 Jerome & Shirley Gerlach  
 Jesse A. Goens  
 Norma Greenwood  
 Marjorie Habenicht  
 Daniel Hackett  
 John & Joan Hagman  
 Michael Halberstam  
 David Handelman  
 Alta J. Hanson  
 Kristine & Douglas Hartman  
 Sarah Hartman & Michael Hay  
 Patricia Haswell & Dick Todd

Peter Hawkins, Jr. & Katherine Hawkins  
 Susan & Grant Hawthorne  
 Daniel & Mary Healy  
 Marilyn J. Henn  
 Scott Hofland  
 Vicki Hooper  
 Adam Isaacs  
 Mimi & Len Jennings  
 Gail M. Jones  
 Emily Joseph  
 Jeff & Pat Karp  
 Lee R. Kaster  
 Amelia Kendall & Christopher Lambe  
 Sheila Kennedy  
 Chris & Senay Kindler  
 Cynthia J. & Tom Kindler  
 Lynde Klein  
 Victor & Kathy Klimoski  
 Beverly & William Knudsen  
 Nancy Lee & Julien V. Koschmann  
 Eva Kovacs  
 Dorothy T. Kuether  
 Stephen T. Lai  
 Sarah B. Lane  
 Lynn & Daniel Langmeyer  
 Deanne W. Larin  
 Joe A. LaRocca  
 Sara M. Larson & Kent Roper  
 Lynn H. Leverty  
 Kent Linder  
 Paula Lott  
 Eva Marsalkova  
 Tami Maus  
 Joseph & Teresa McDonnell  
 Brenda & Warren McGuire  
 Maureen Meara  
 Joanne & James Menke  
 Margaret A. Michaelson  
 Deborah L. Miller & William J. Lovegren  
 Nancy S. & Richard L. Miller  
 Virginia T. & Duffy G. Miller  
 Linda & James Milow  
 R. Angelo Minuti  
 James Moechnig  
 Jenna M. Moeger  
 Mary M. Mohr  
 Monica C. Moody  
 Marsha G. Mose  
 Eamonn Murphy  
 Stephen J. Murray  
 Rose Nathan  
 Brittany Nelson-Cheeseman  
 Merritt C. Nequette  
 Ms. Elaine Nissen

Matthew & Nancy Nordeen  
 Erick E. Novelo  
 Mary Beth & Timothy R. Ocacek  
 Tamaki Ogata  
 Michelle & David Olsen  
 Alexis Ostrowski  
 Jessica & Jack Phinney  
 Elizabeth E. Polles  
 Karen Randolph  
 Mark Reis  
 Janet Renz  
 Ellen Rider & Stanley King  
 Curtis A. & Beverly Robinson  
 Judy Royster  
 Dianne M. Sandberg  
 Richard L. Savage  
 Beth A. Schmiege  
 Scott C. Schuck  
 Robert & Belle Scott  
 Stacy Sebasto  
 Chad Seizert  
 Mara Silins  
 Jillian Simpson  
 Ring Sin  
 Rudolf F. Smets  
 Michael Smith  
 Sunshine Somerville  
 Kathleen M. Spillane  
 Susan K. Spindler  
 Sarah M. & Todd A. Stivland  
 Mary Stoick  
 Erik Tanouye  
 Michael Taylor  
 Alyssa B. Tochka  
 Shirley & Paul Tollefson  
 Richard Tomassoni & Jane Gleason  
 Susan Toth & James Stageberg  
 Eric J. Turner  
 Blake Unger Dvorchik  
 Faith Vandermar  
 Steve & Kathy Vaughan  
 Emily J. Vennerstrom  
 John W. Wallace & Ellen J. Rashbaum  
 John Welch  
 Dana White  
 Halene Whitfield  
 Jennifer Wig  
 Janet F. Wilcox  
 Jennifer Wilson  
 Michael Winikoff  
 Derek Wollenstein  
 Mariel L. & Frederick H. Wolter  
 Alyce & Iwao Yamanaka



*“Maybe it's just a drop in the bucket, but like Mother Teresa said it's important to put that drop in and pretty soon the bucket is full.”*

– Steve Smaciarz

Michol O'Connor  
Jennifer & Henry Ogden  
Chrystal O'Hanlon  
Luis F. Ortiz  
Osprey Foundation / James E. Bohnen  
Stephan & Leigh Ostrander  
Christopher Paola  
Carolyn & Robert Papke  
Anne B. & Paul W. Parker  
Hans J. Paulokat  
Virginia G. Petty  
Anne Phares  
Phillips-Green Foundation / Victoria Starr  
Play4Darfur  
Leila D. J. Poullada  
PSEG Power of Giving Campaign  
Mike S. Punja  
Karen Randolph  
Mukund Rao  
Zoe Reese & Donald Reese  
Gretchen A Reilly  
Susan & Robert Reynolds  
William & Joan Rigby  
Carol Robertson  
L & S Rosenberg Family Foundation / Leon & Sonia Rosenberg  
Chandra Roukema  
Lillian & William Rovick  
Brynhild Rowberg  
Donald B. Rudy & Anne T. Hager Rudy  
Catharine Ruther  
Eric & Tracey Ruzicka  
S.I.C. Club Ward Melville High School, East Setauket NY  
Hugh Schall  
Dennis J. Schapiro & Jeanne Andre  
Eric Schindewolf  
Elizabeth Schmid  
Anne & Wayne Schmieg  
M. Jay Shahidi & Csilla Grauzer  
Philip & Carolyn Simard  
Barbara Sitzman & James Moore  
Richard L. Skarie  
Glen & Anna Skovholt  
Christopher Smith  
Elaine F. & Robert B. Smith  
Rhonda D. Smith  
Sarah J. Snapp  
David Snyder & Margaret Salamon, M.D.  
Nancy J. Sobelson  
Sunshine Somerville  
Valerie A. & Gary Spickler  
Dorothy Sporney  
Lynne Stanley & Christopher Elliott Charitable Gift Account  
Axel D. Steuer  
ZNT Stevens Charitable Trust / Mary Priscilla Stevens  
David Stigberg & Sara Taber  
Stillwater Area High School Amnesty International Group, Stillwater MN  
Sarah M. & Todd A. Stivland  
Sandra & William Stryker  
Kathleen H. Stuart  
Stephanie & Robert J. Stuart  
Rose Sullivan  
Aaron Symko  
Joseph H. & Cecilia J. Szurszewski  
Sarah E. Taffee  
Lesley Tannahill-Oi  
Michael Taylor  
Dolores M. Theisen  
Gretta Thomas  
Tisbest Charity Gift Cards  
Joseph M. Tombers, M.D.  
Henry Trexler  
Lynette & Glenn Trygstad  
Eric J. Turner  
Emily Anne Staples Tuttle Fund of The Minnesota Community Foundation  
Ruth B. Usem

Phyllis Wagner  
Lillian G. Wallis  
John Welch  
Dana White  
Erica & David Whitney  
The Whitney Foundation / Wheelock Whitney, III  
T. J. Willard & Associates, Inc.  
Jennifer Wilson  
Penny Winton  
Jim Winzenburg  
Marjorie Wood  
Ann & Gary Wynia  
Cathleen Yonahara  
Kenneth R. & Jeanne M. Young  
Paul J. Ziemann  
Nan & James Zosel

**\$100+**  
Donna L. Abert  
Monte Achenbach  
Phyllis J. Adams  
Kenneth G. Adler  
Kimberly A. Adler & Aaron M. Knight  
Mark & Mary Adorney  
Advance Consulting  
Ruth B. Agar  
Rudolph A. Agosti  
John W. Albers  
Maudella & Don Albright  
Jon & Jean Albrightson  
Sameen Ali  
Thomas T. Amatruda & Lynne Morishita  
Susan L. Anacker & James Johnson  
Anna & Neal Anderson  
Carol R. Anderson  
Jan & Wayne Anderson  
Paul Anderson  
Robert & Suzanne Anderson  
Loralee Andert  
Nancy & Stew Andrews  
Paul Ansara

Arafina, Inc / George Stuart Ackman & Ann M. Rutledge  
Nancy J. Arneson  
Lee & Joanne Arvid  
Rosanna J. Ash  
Rhoda S. & William C. Ashby  
AT&T Foundation Employee Giving Program  
Sigrid A. Bachmann  
John & Barbara Bacich  
Douglas B. Bailey  
Walter & Ginger Bailey  
Barbara Ballinger  
Charles A. Bancroft  
Penelope A. Banwart  
Timothy M. Bardell  
Ruth J. & Victor F. Barela  
Kim & Robert Barnett, II  
Earl W. Bartlett  
Marilyn & Merritt Bartlett  
Catherine J. Bartola  
Vincent I. & Susan Stevens Barton  
Joyce K. Battcher-Malchow  
Cheryl R. Bauer  
The Baumann Family Foundation / James Scharps Baumann  
Dwight Baxter  
Diana M. Bayoff  
Judith N. Bearman  
Jeanne Bearmon  
Ann Beaulieu  
Rev. Alfred J. Bebel  
Glenn Bechler & Kathy Casey  
Charles & Diane Becker  
Jonathan Beckhardt  
Elizabeth & Peter J. Belfiore  
Karen Bell-Brugger  
Norman Peter Belle  
Lyla Bendsen  
Carol L. Bennett  
Jo Anne & Howard Bennett  
Susan M. Benolken  
James A. Benshoof  
Nancy Benson  
Catherine Bent  
Sandra & Saul Benzeev  
C. Christopher Bercaw  
Jenna M. Bergevin  
Harold A. Berglund  
Delbert & Judith Bergstrom  
Shayna M. Berkowitz  
David H. & Constance Berman  
Josh A. Berman  
Suzan & Victor Bernhard  
Scott Berry & Kathryn Johnson  
Larry & Judy Bertelsen  
Jane C. Betts  
Michaelynn Beutel

Jay Beytien  
Brian D. Bigelow  
Wayne & Jean Binfet  
Cecil M. Birch  
Stanley H. & Sharon M. Birnbaum  
Thomas C. Bishop  
Thomas & Julia Bittinger  
Evelyn Bjerck  
Marian & Glen Bjorklund  
Dianne Bjornson Damer & Lewis Damer  
Charles & Mary Blastervold  
Janice L. Blomberg  
Carolyn Bloom  
Sharon & Richard Blumenthal  
Arlene D. Board  
Thelma Boeder  
Terry W. & Eunice Boehlke  
Joanne Bolduc  
Catherine Bonnard & Tom Sullivan  
Susan Boren  
Catherine Born  
Tom Bostelmann  
Anita Boucher & Jeff Bangsberg  
David R. Boulware  
Carol J. Bouska & Jeremy Iggers  
Ms. Lisa A. Bower  
E.J.W. & Trudi S. Bowie  
Daniel Boyer  
Andy D. & Jenny A. Bradley  
Arthur Brady & Jennifer Fridley  
Harold E. Brady  
Jan Braeunig  
Andres & Nancy Brandi  
Nicole Brandrup  
Patti J. Brase  
Andrea Breen & William Perkiss  
Mark Breen & Sara Stevenson  
Eileen Brenner  
Donald R. & Susan W. Brewer  
Maria Minich Brewer  
Wanda Breyer  
Daniel G. Brick  
C. Roland & Susan Bridges  
Judith & Arnold Brier Charitable Gift Fund  
Roland Brilla  
Michael Broad  
Andrew & Christine Brockton  
Conley & Marney Brooks  
Conley Brooks  
The Ronnie and Roger Brooks Fund of The Saint Paul Foundation  
Mrs. & Mr. H. Wesley Brown  
Nancy S. Brown

Omar L. & Jo Ann Brown  
Patricia A. Brown  
Roger & Ingrid Brown  
Sarah Brown  
Doralee & Harold Broxey  
Terrance M. Brueck  
Paula Bryan  
Marilyn Queen Tickle Bryant  
Janet C. Bucher  
Clifford Buikema  
Deborah E. Bullock  
Diane E. Bundlie  
Susan Lamson Bundy  
John E. Burgess  
Edward M. & Barbara J. Burnes  
John C. & Sandy Burton  
Linda G. Burton & David T. Rayson  
Martha Bushnell  
Fay & Julian Bussgang Family Fund of Combined Jewish Phil.  
Mary Cable-Puente  
Beth E. Calengor  
Patricia A. Callaghan  
Roger J. Callan  
Constance M. & William W. Cameron  
Louise A. Cameron  
Charlotte Campbell  
Sara Campbell  
The Capital Grill Restaurant  
Deborah A. Carlson & Jon L. Schasker  
Duane S. & Mimi H. Carlson  
Mary Lou J. Carpenter  
Daniel C. Casar  
Dennis Cashman  
Millie & Paul Caspersen  
Sheila Castleberg  
Emmy W. Chang  
Mary L. Charles  
Erik Charlston  
Mark E. Charlton  
Alfredmy Chessor  
Michelle Chiu  
Teela Chlebeck  
Christ Lutheran Church Women, Saint Paul MN  
Christ The Redeemer Church, Lake Orion MI  
Iola E. Christopherson  
Venice Chua  
Heber Cifuentes  
Nancy J. Cincotta  
Anna K. Clark  
Kristina T. Clark  
Carol J. Clarke  
David H. & Judy Clayton  
Debbie A. Clements  
Katherine Clinch  
Bruce S. Cohen

Richard G. & Marsha L. Cohn  
Elaine & Foster Cole  
Joseph G. & Tammi Colianni  
Phyllis & Thomas Colwell  
Conant Family Foundation / Doris Conant  
Phebe Connolly  
Roberta M. Conway  
Catherine C. Cooke  
Katherine C. Coon  
Stephen & Christine Cooney  
Megan G. & Terry Cooper  
R. Lee & Ai T. Corbett  
Glenn A. & Nan D. Corliss  
J. Kevin Costley  
Christine Cottrell  
Michael Coutu  
John & Judith Covell  
Robert M. Cowle & Andrea Stern  
Philip Crawford  
Sybil Crawford  
Laura & John Crosby  
Dan Crow  
Romeo & Mary Ann Cyr  
Frederick & Marlene Dahl  
James M. Dahl  
Marion Dahl  
Sonja & Ken Dahlager  
John & Roberta Dahler  
Kathleen A. Daly  
Paul Dame  
Ella Marie Dammann  
Rachel C. Dapuzzo  
Gail O. Darden  
Erwin & Phyllis Dargis  
Barbara A. Davidson  
Charlotte G. Davis  
Dr. Joy & John Davis  
Michael & Marianne Davis  
Mary Beth & Dana Dawson  
Patrick & Cynthia Dawson  
Leni De Mik, Ph.D.  
Fred de Sam Lazaro  
Robert & Mary DeBruin  
Paula W. & Cy DeCosse  
Katherine & Gregory Dehler  
Amos & Sue Deinard  
Susan & Conrad DeJong Fund at The Santa Fe Community Foundation  
Lori Delahunt  
James M. Delaplane & Mark G. O'Donnell  
Michelle A. Dement  
Neil Derechin & Beatrice Rothweiler  
John & Deb DeSanto  
Marlys J. Dewor  
Ritik Dholakia  
Seymour & Elaine Diamond  
Nina DiAngelis & Family

Natalio Diaz  
Leah D. & Kenneth E. Dick  
Kay M. Diederich  
Dennis & Nickie Dillon  
Kristine Dimassis  
Anne M. Dimock & Jon E. Kingstad  
Carolyn J. Dindorf  
Glen S. Diseth  
Robert Dodge  
Daniel E. Doll  
Sheila Donnelly-Coyne  
Scott Dorfman & Leigh Schoettinger  
Jane Dosemagen  
Jennifer Douglass  
Mary Downey  
Mary Theresa Downing  
Richard F. Doyle  
Susan Doyle & Richard Oberg  
Kathryn Draper  
Cynthia Drewert  
June M. Drawing  
John A. Dreelan  
Carol R. Drinkard  
John & Dolores Driscoll  
William & Mary Ann Droel  
Andrea C. Dronen  
Harrison R. Duck  
Sally L. DuFour  
Roger D. Duncan  
Paul Dunkerley  
Arthur Dunlop  
Roberta Duroe  
Mary D. DuVall  
Janet & French Eason  
Rosalind Edelstein  
Edison International Employee Giving Campaign  
David H. Edstrom  
Vicki Effertz  
Deborah Eisenstadt  
Robert & Leoda Eisentrager  
Frances Ellefson  
Didier S. Ellepo  
John J. & Susan G. Ellis  
Dean E. & Heidi A. Emanuel  
Chip & Vicki Emery  
George & Margaret Emslie  
Ellen & Scott Enebo  
Linda L. Engberg  
Desiree Engel  
Jeffrey Engels  
Clement Engen  
John R. Engen  
Rebecca Erdahl  
Ronald Erickson  
Larry Espel  
Sandra Eubanks  
Darren A. Evenson  
Jeanine & Charles Evenson  
Sandra L. Evenson

Tom Ewert  
Garold L. & Joyce E. Faber  
Nathan Fagre  
Laurie & Peter Fahrendorf  
David N. Falde & Elizabeth Spooner-Falde  
Frances A. Farley  
Walter W. & Cecilee A. FASTER  
Suzanne M. Fattah  
John & Diana Faulhaber  
Daisy Feidt  
Nancy J. Feldman  
Constance L. Ferebee  
Peter Ferrara  
Carl G. Ferrell  
Barbara C. Filner  
Patricia E. Finch  
Susan Fink & Tim McCall  
John & Janice Finnegan  
First Baptist Church Missions, Hudson WI  
Maureen G. Fischer  
Georgeanna Fischetti & Bob Kritz  
Patricia L. & Richard M. Fishel  
Phyllis & Richard Fisher  
Quentin & Gail Fisher  
Ann W. Fitch  
Eden Fitzgerald  
Emily Fitzgerald  
Robert & Patricia Fitzgerald  
Paula M. Fitzmaurice  
Larry E. Fix & Jeanette Gillet-Fix  
Paul O. Flack  
Dawn Flanery  
Karen Flannery & Peter Lund  
The Honorable Robert Flaten & Mrs. Carroll Flaten  
Nancy A. Flinn  
Gretchen A. Flynn  
Brian & Cheryl Fogarty  
Gerald W. Foley  
Diane E. Follmer  
Edith & James Ford  
John & Elizabeth Formwalt  
Karl F. & Jennifer L. Forsberg  
Kyle F. Fortin  
Rodney & Susan Foss  
Cynthia M. & David C. Foster  
Linda S. & Frederic J. Foster  
Karen A. Fournier  
Jenny E. & Richard E. Fowler  
Chester & Linda Francis  
Florence F. Francis  
James & Lynda Frantz  
Bobbie A. Fredsall  
Jeff A. & Penny Freier  
Mary Anne Frey Fund at The Dayton Foundation  
Frank Friedman

Richard E. & Marjorie Friedman  
Patricia Froelicher & David Grimsted  
Rachel Gabara & Claudio Saunt  
Robert & Barbara Gaertner  
Pablo & Elizabeth Gaito  
Jane B. Galbraith  
Linda Galdieri, MFT  
Therese M. Gales & Mark Gaertner  
Bradford K. Gallagher  
Dennis M. Gallaher  
Mr. Stephen I. Gallant  
Gap Inc. Giving Campaign  
Fred Garbe  
David T. Garbett  
Mark & Nancy Garrison  
Jane E. Gartner  
Raymond & Linda Gatti  
Alice Gavigan  
Eugene W. & Juanita B. Geisz  
Jane A. Gendron  
Mary & Dale Gerding  
F. Harold Giedt  
Heiner M. Giese  
Stephen J. Gilberstadt  
Jane Gilles  
Frances A. Gillette  
Sydney Girardi  
David Girk  
Helen W. Gjessing  
Barbara & Simeon Glaser  
Shelly & Jon Glover  
Howard & Karen Gochberg  
Jesse A. Goens  
Marybess D. Goeppinger  
Frederick & Mary Goetz  
Ethel C. Gofen  
Kitty A. & Mark A. Gogins  
Dr. Mace Goldfarb  
Dr. Anne E. Goldfeld  
Pamela H. & Robert P. Goldman  
Bonnie & Steven Goldsmith  
Jane A. Goltz  
Allen Gooch & Mary Dow Ryerse  
Virginia Goplen  
Grace Gorringer  
Mary & Francis J. Goschy  
Virginia Gove  
John Graber  
Grace Lutheran Church, Apple Valley MN  
Gerald Grady  
Doris W. Graf  
David & Candyce Gray  
Evelyn H. Gray  
Greater Maple Valley Community Center  
Richard K. Green



Jeff & Joyce Greene  
 Carol T. Greenwald & Charles A. Kantor  
 Norma Greenwood  
 Paul R. Grengs  
 David C. Griffin  
 Sima L. Griffith  
 Mark F. Griswold  
 Dora Gross  
 Jonathan W. Gross & Philip Mahin  
 John & Kathleen Guldberg  
 Hans & L. Haacke  
 Marjorie Habenicht  
 Deborah Hadas & Robert Hanson  
 David L. Hagen, Jr.  
 Peter Hagen  
 John & Joan Hagman  
 Mary & John Haider  
 Michael Halberstam  
 Sandra E. Hall  
 Ken W. & Suanne B. Hallberg  
 Mark & Mary Jo Hallberg  
 Betsy Hallett  
 Robert & Elaine Halliday  
 E H Halpin  
 Carol C. Halvorson  
 Jacqueline K. & Charles D. Hamblin  
 Bill & Ginger Hamer  
 Tracy Hamlin & John Harrington  
 William N. Handsaker  
 William L. & Kim Hannon  
 Richard Hansen & Alyce Neperud  
 Robert & Joanne Hansen  
 Kenneth L. & Judith Hansen-Winden  
 Alta J. Hanson  
 David & Miriam Hanson  
 Lindsay Hanson & Scott Goldberg  
 Rodney & Diana Hanson  
 Basavaraj K. Haralenne  
 Robert Hariman  
 Robert A. Harper  
 Donna Harris & George Dunn  
 Richard C. & Carol J. Harruff  
 Patricia Sweney Hart  
 Claire K. Hartley  
 Kristine & Douglas Hartman  
 Susan Hasti & Michael Friedman  
 Patricia Haswell & Dick Todd  
 James F. & Cathie Hatch  
 Linda M. Hatt  
 Lois & Neil Haugerud  
 Mrs. Verna A. Hauser  
 Peter Hawkins, Jr. & Katherine Hawkins  
 Simon & Avia Hawksworth

Mr. & Mrs. Bud Hayden  
 Willard & Barbara Hayden Fund  
 Francis & Bonita Heck  
 Cheryl A. Thomas & Roger W. Heegaard Fund  
 Jeff & Lucy Heegaard  
 Dianne C. Heins  
 Dorothee Heisenberg  
 Donald Helgeson  
 Robyn L. & Stephen H. Helland  
 James P. Helm  
 Kathy & John Hendricks  
 Nancy Read Hendricks  
 Michael Henley & Randi Yoder  
 Marilyn J. Henn  
 Frank & Jane Hennessy  
 Susan W. Hennessy & Jackson Cussons  
 Monica L. Herk  
 Kate Herlihy  
 Michael W. Hero  
 Darvia K. Herold & Marvin J. Plakut  
 Robert W. & Pamela C. Herrick  
 Patricia Colleen Herrmann  
 Laurel M. Hersey  
 Gene F. & Patricia A. Hetland  
 Irene M. Hewitt  
 R. Lee & Elizabeth Hickerson  
 Arlene Hicks  
 Patricia L. Higgins  
 Joan Higinbotham  
 Mary E. Hill  
 Lew & Grace E. Hines  
 Rebecca & Paul Hirdman  
 Geoffrey A. Hirsch  
 Vanessa Hirsch  
 Larry H. Hjelle  
 Sarah Hobbie  
 James & Sally Hodge  
 Bonnie Hoefler  
 Donald Hoff  
 Nancy I. Hoff  
 Alan & Judith Hoffman  
 Jerome Hoffman  
 Scott Hoffland  
 Donald & Suzanne Hofstrand  
 Dr. James C. Hogan  
 Bruce & Ilona Hoggarth  
 Linka & Greg Holey  
 Fred Holland  
 John & Olga Hollister  
 Lewis B. Holmes  
 Randall & Julie Holmes  
 Vicki P. Holmstrom  
 Lee A. Hooper  
 Vicki Hooper  
 Mary E. Hoopman  
 Roberta A. Houston

Michael P. Hudson & Elaine M. Caoili  
 Chelsey Jo Huisman  
 Margaret Hull  
 Mary & Everett Humke  
 Sokan Hunro  
 Christopher B. & Sheryl A. Hunt  
 Scot M. Hunter  
 Mr. & Mrs. Donald Huntington  
 Deborah L. Huskins  
 Andrew T. Hynek  
 I Do Foundation  
 Wim T. & Kathryn D. Ibes  
 Jules Inda & Patrick Carney  
 Mary & Art Indelicato  
 Marjorie Ingram  
 Ardis & John Ivory  
 Jean Jachman  
 Donald E. & Rennie A. Jackson  
 Joel & Nikki Jackson  
 Lila & Harry Jacob  
 Rosamond T. & Bernard Jacob  
 Jean & Robert Jacobson  
 Alonzo & Elisabeth Jamison  
 Valerie Janda  
 Diane K. Jaquay  
 Gae L. Jarvis  
 Jacqueline & Robert Jasper  
 Monwhea Jeng  
 David Jennings  
 Mimi & Len Jennings  
 Julie M. Jensen  
 James & Judith Johannsen  
 Eleanor M. Johns  
 Bruce L. Johnson  
 Clare Johnson  
 David W. & Linda M. Johnson  
 Douglas & Margel Johnson

Jay M. & Kirsten Johnson  
 Kathleen S. Johnson  
 Kathryn & Dean Johnson  
 Pat C. Johnson  
 Patricia G. Johnson  
 Renee L. Johnson  
 Wayne C. Johnson  
 David & Jacquelyn Johnston  
 John Johnston  
 Catherine & Guy Jones  
 Gail M. Jones  
 Michael B. Jones  
 Patricia Jones  
 Ruth M. Jones  
 Steven & Candace Jongewaard  
 Drs. Sally & Charles Jorgensen  
 Emily Joseph  
 Clark & Karen Judy  
 Christopher Julin & Catherine Winter  
 Dorothy M. Jung  
 JustGive.Org  
 JUUT Midwest, Inc.  
 Mary F. Kading  
 Ruth & Paul Kadota  
 Christine A. Kaehler  
 Jean O. Kaelber  
 Sugandha & Upendranath Kamalapuri  
 Connie Kamara  
 Faye Kangas  
 Jessica M. Kaplan  
 Steven E. Kaplan  
 Joachim Karger  
 Quinn & Daon Karpan  
 The Kasimor Family  
 Patrice Kaska  
 Patricia Kasper  
 Lee R. Kaster  
 Carol R. Katz Connelly & Mark T. Connelly  
 Paul & Deirdre G. Katz  
 Penny & Stuart Katz

Margaret W. & Patrick S. Keating  
 Lennlee Keep  
 Charles J. Keffer  
 Terry Keir  
 John Kelley & Lisa Van Dusen  
 Chris & Les Kellow  
 James Kelly & Audrey Pool Kelly  
 Robert S. Kendall  
 James E. & Linda Kiehne  
 Kincaid's Restaurant  
 Chris & Senay Kindler  
 Cynthia J. & Tom Kindler  
 Neil & Diana King  
 Gretchen & Neal Kingsley  
 Margaret Kirkpatrick  
 Kiwanis Club Of North Suburban St. Paul  
 Ingrid H. Kizen  
 Mark Kjolhaug  
 Debra S. Klaber  
 Carol A. Klee & Luis Ramos-Garcia  
 Jan Kleinman & Fadil Santosa  
 Mae A. Kleven  
 Jean D. Kliewer  
 Donald & Sarah Klinghammer  
 Carol Klukaczewski, Jim Newton & Grace Newton  
 Bernadette Knaeble  
 Joseph Knaeble & Mary Hartnett  
 Marc E. Knoche  
 Morley M. Knoll Fund of The Saint Paul Foundation  
 Wendy K. Knox  
 James & Charlene Knudsen  
 Carolyn R. & Clayton Knutson  
 Gloria J. Koehl  
 John & Julie Koehler  
 Mary & Ted Koenecke

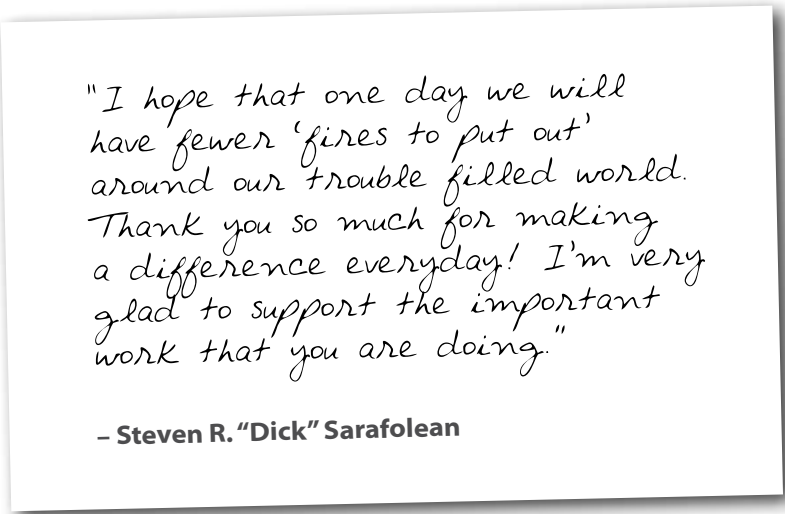
Eva Koldovsky  
 Gus P. & Karen G. Kolias  
 Theodore M. Kopacek  
 Mary M. Koppel  
 Dr. & Mrs. Allan Korn  
 Nancy Lee & Julien V. Koschmann  
 John & Dodie Kostishack  
 Eva Kovacs  
 Kowalski's Grand Market  
 Kowalski's Uptown Market  
 Stanley B. Kozak  
 M. Constance Kozlak  
 James J. Kramer  
 Leonard Kramer  
 Lawrence A. Krantz & Diane Pittman  
 Barbara J. Kreger  
 Timothy R. Krenik  
 Philip J. Krieg  
 Mark Krinke  
 Duane W. & Mary Alyce Krohnke  
 Shawn & Mary Engel  
 Carrie Kuehl  
 Charles Kuetner & Susan Effertz  
 Dorothy T. Kuetner  
 Bruce & Cynthia Kula  
 Frank E. Kulbaski  
 Donna L. Kump  
 Kathy & Matthew L. Kyler  
 Kelley & Thomas Laesch  
 Stephen T. Lai  
 James M. Laing  
 Paul A. Lamb  
 Sharon A. Lamb  
 The Lamm Family Foundation / Robyn B. Lamm  
 Harry A. Lando & Lois I. Hamilton  
 Bruce Landwehr  
 Sarah B. Lane  
 Gary B. Langer  
 Rollie H. Langer  
 John Langwith  
 Jon & Diane Larson  
 Ken & Vickie Larson  
 Laurie & John Larson  
 Robert S. Larson  
 Thomas L. & Virginia M. Larson  
 James P. & Nancy LaRue  
 Catherine Lasnik  
 Melissa R. Latterell  
 Timothy T. Law  
 Kathleen A. Lawless & John G. Keyes  
 William & Rita Lawson  
 Donna Lazorik  
 Alexander & Barbara Leaf  
 Erica Leatherman  
 Cindy Lee

Mary Ann & E D. Lee  
 Rick & Gina Lefevour  
 Sharon S. Legg  
 Bradley & Karee Lehrman  
 Linda & Douglas Leicht  
 Diane Leider  
 Nowell & Julia Leitzke  
 Harry & Gretchen Leland  
 Kevin Lenhart  
 Gayle Lens  
 Elizabeth M. Lentz  
 William Lesner  
 Steven D. & Michelle Leupke  
 Lynn H. Leverty  
 Herbert & Cornelia Levin  
 Samuel & Libby Levin  
 Sheldon & Delores Levin  
 Adam E. Levine  
 Karen & Jerrold Levy  
 Lewellen Gift Fund / Charles & JoAnne Lewellen  
 Lawrence B. Li, M.D.  
 Sally & Jay Lieberman  
 Lowell G. & Ingrid E. Liedman  
 The Lifshutz Foundation  
 Nan P. Lightner  
 Dorothy C. Lilja  
 Martha L. Lind  
 Kent Linder  
 Jacqueline A. Lindskoog  
 John C. Lindstrom  
 Nancy L. Lines  
 Linda Lipsy  
 Steven R. Liston  
 Paul Litton  
 Rand Livingston  
 Samuel & Judith Livingston  
 James Ljutic  
 Steven W. & Jeanette C. Loken  
 John & Kathryn Longley  
 The Longview Foundation / Ella P. Crosby  
 Tom & Marvalene Looby  
 Katherine M. Lorenz  
 Suzy Lovestrand  
 Saroj & Erich Lucht  
 Maria & Albert Lucia  
 Joan Luenemann  
 Russell V. & Ellen T. Luepker  
 Ruth Lunde  
 Raymond & Lorraine Lundquist  
 John & Mary Ellen Lundsten  
 Diann C. Lunow  
 Lutsen Resort  
 Joyce S. Lyon  
 Karen & Stephen Lyons  
 Amy B. Lytton  
 Macalester Plymouth United Church, Saint Paul MN  
 Scherraine B. Mack

Margaret E. Mackallor  
 Robert E. MacKenzie  
 Kathryn A. MacLlane  
 The Bryan MacPherson & Pamela Van Hine Fund  
 Anne Maertz  
 Eileen Mahon  
 Maureen Mahoney  
 Tracy Maki & John Dybvig  
 Ernest W. Malkewitz  
 Muriel E. Mandel  
 Rita J. P. & Gerald B. Manninen  
 Deane & Nancy Manolis  
 Minda & Stephen Manolis  
 Martha Marchand  
 Catherine M. Marien  
 Ruth Brooke Markowitz  
 Wendy & Stanley Marsh  
 Donald Marshall  
 Sean & Leigh Martin  
 Sara & James Martineau  
 Mayme A. Martinson  
 Paula Mascarenhas  
 Massachusetts Institute of Technology Community Giving  
 Mr. Yoshio Matsumoto  
 James Mayer  
 Mayfield Congregational Church, Sycamore IL  
 Charles H. & Carolyn J Mayo  
 D. Janet McBride  
 James & Vanessa McCall  
 Deb McCarl  
 Kathleen A. McCarthy  
 McCormick & Schmick's Restaurant  
 Mary C. McCready  
 Carolyn D. & David W. McCurdy  
 Kristina M. S. Mcdermott, M.D.  
 Patricia McDonald  
 Joseph & Teresa McDonnell  
 Robert & Jonda McFarlane  
 Rita A. McGaughey  
 Barbara & John McGowan, Jr.  
 Lori Mcintyre  
 Mary G. McKinney  
 Tammis McMillan  
 Rosemary McMonigal  
 Peter & Pamela McMurry  
 Ronald W. McNamara, C.L.U.  
 Paul D. McRoberts  
 Joan P. & William McTeer  
 Teresa M. McWilliams  
 Maureen Meara  
 Kathleen & Timothy Meehan  
 Janet L. Meilahn  
 Rhonda & Craig Melancon  
 Joanne & James Menke  
 Robert B. Mersky

Thomas & Ann Merz  
 Matthew Metcalf  
 David Meyer  
 Natalie K. Meyer  
 Sharon A. Meyer  
 Margaret A. Michaelson  
 Larry & Roberta Miller  
 Michael Miller & Marita Powell  
 Mildred H. Miller  
 Rohn & Claire Miller  
 Joyanne B. Mills  
 Minnesota Opera  
 D.E. & Helen Minnick  
 R. Angelo Minuti  
 Nancy Mischel  
 Elizabeth R. Mitchell  
 Carol Mizuno  
 Robert J. and Sharon L. Moeller Foundation

David Mollerstuen  
 Monica C. Moody  
 Geraldine R. Mooers  
 Shirley Moore  
 Douglas G. Moran  
 Brooke D. Mordy  
 Marcia Morgan & Tom Parnell  
 Morgan Stanley  
 Sarah E. Morris  
 Joan Morrison  
 Bruce & Rose Mortenson  
 Molly & Rick Morton  
 William Mosberg & Marion E. Poulin  
 Marlene S. Moskop  
 Kathleen T. Moss  
 Ann E. Mueller  
 Neil E. Mueller  
 Diana Mulcahy



# Matching Gifts

Matching Gifts double – and sometimes triple – the impact of a single gift. The organizations below generously matched donations made by their employees and stakeholders. Check with your Human Resources department to see if your donation can be matched.

- AARP Monthly Corporate Match
- Ameriprise Financial Gift Matching Program
- Assurant, Inc
- Bank of America Matching Gifts Program
- CornProducts International Matching Gifts Program
- Electronic Arts OutrEAch
- The GE Foundation
- GlaxoSmithKline Foundation
- Goldman, Sachs & Co.
- Juniper Networks Matching Gift Program
- Liquidnet
- The McKnight Foundation
- Medco Health Solutions, Inc.
- Merck Partnership for Giving Campaign
- Merrill Lynch & Co. Foundation, Inc
- Microsoft Giving Campaign & Matching Gifts Program
- PepsiCo Foundation
- The Pew Charitable Trusts
- The Prudential Foundation Matching Gifts Program
- Quaker Hill Foundation
- QUALCOMM Matching Gift Program
- TCF Foundation/Matching Gifts
- Thomson Reuters
- Thrivent Financial for Lutherans Foundation
- Verizon Foundation
- Wachovia Foundation Matching Gifts Program



Janice & Dale Mulfinger  
David J. Mulla  
Neda Mulla  
Wendy & James Mullaney  
Kathleen P. Mullinix  
Eamonn Murphy  
Timothy R. Murphy  
Kathleen Murray & Paul D  
Cerkvenik  
Stephen J. Murray  
Jill Murrow  
Mary Musielewicz & Richard  
Dietman  
Christy & Gordon L. Myers  
Susan Morros Nagel & Marc  
Nagel  
Thomas E. & Patoomtip  
Nagle  
Isobel H. Neal  
Patricia B. & Craig Neal  
Clifford A. & Valerie A. Nebel  
Adele & Seymour Neems  
Jennifer Nelson  
Kari E. Nelson & Steven W.  
Meyer  
Mary D. Nelson  
Mildred A. Nelson  
Muriel B. Nelson  
Sandra K. Nelson  
Brittany Nelson-Cheeseman  
Mark E. Nemecc  
Merritt C. Nequette  
Christy & Paul S. Nesja  
Kari Ness  
Linda S. Neuman  
Nancy Nevergole  
New Garden Friends Meeting  
Elizabeth M. Newberry  
David A. & Anna S. Newton  
Tammy Ngo  
Tuyet Nguyen & John Luk  
Tuyet B. Nguyen  
Mary Heinz & Doug Nick  
Tim C. Nielsen  
Ms. Elaine Nissen  
Kenneth E. & Carolyn C.  
Nopar  
Donald E. Norvik  
Erick E. Novelo  
Lisa Novotny  
Andrew Nuckols  
Marilyn & Sidney Nudelman  
Philanthropic Fund  
Nancy & Glenn Ochsenreiter  
Laurie A. O'Connor  
Mary E. O'Connor  
Mary Ann Ogden  
Mary M. Ogden  
Cynthia & John O'Halloran  
John E. O'Laughlin  
John & Yvette Oldendorf  
Mrs. Floryne E. Olen  
Gregory & Rhoda Olsen

Michelle & David Olsen  
Virginia & George Olsen  
Beth Olson  
Burton & Georgiann Olson  
Curtis & Lisa Olson  
Donald A. Olson  
Mr. & Mrs. Ellsworth Olson  
Margaret & Roald Olson  
M. Kristine & Grant  
Oppegard  
Leonard Oppenheimer &  
Lydia Schultz  
Todd & Anh Oppenheimer  
Ruth & Ahmad Orandi  
Mary O'Reilly  
Mary Kay & Paul Orman  
Paula D. Osborn  
Donald A. Osell  
Hilvie E. Ostrow  
Alexis Ostrowski  
Erich Otto  
Arthur J. Ourieff  
Michael K. Owu  
Stephen Pack  
Mary Anne & Roger B. Page  
Susan C. Page  
Teresa A. Page  
George Pahl-Polich  
Sophie Paine  
John Painter  
Anna Palchik  
Debra & Michael Palmquist  
Palomino Restaurant  
Robert Pancner  
Kasia Paprocki  
Yonhi Park & Michael J.  
Pierce  
Dorothy Parker  
David D. Parsons  
Gerard R. & Sally L. Patrick  
Arlin G. & Betty M. Paulson  
James Payne  
Phyllis & Edgar Pears  
Thomas A. Pearson  
John & Linda Peck  
Laura K. Perkins  
Jonathan Perman & Melissa  
Hilton  
Lorraine & Norman Perman  
David V. Perrin & Margaret J.  
Hustad-Perrin  
James W. Perry  
Brad Peterson & Anne Hoops  
Willis & Dorothy Peterson  
Fund  
Jeffrey F. Peterson  
John & Susanne M. Peterson  
Joyce Peterson  
Patricia & Gary Peterson  
Rick & Naomi Peterson  
Silas C. Peterson, Jr.  
Sylvia Peterson  
Virginia Peterson

PG&E Campaign for the  
Community  
Ann & Felix Phillips  
Mary Breen Pieh & Timothy  
Pieh  
Charles K. & Kathleen K.  
Piehl  
Edward B. & Jane M. Pierson  
Helen A. Pietrowski  
Lisa K. Pike  
Joanne M. Pilat & Larry  
Valentine  
Jess Pitner  
Lawrence D. Pitsch & Gail  
Gresser-Pitsch  
Joyce Piven  
Hy Plimpton  
Thomas Pohlad  
Sally Boyd Polk Family  
Fund of The Minneapolis  
Foundation  
Elizabeth E. Polles  
Ronald Popeski  
Berta & Michael Porterfield  
Bennett R. Povlow  
Walter E. & Harriet J. Pratt  
Father Henry S. Preneta  
Lisa Proctor & Jeff Krull  
Kenneth E. Puffer  
Puritan Finance Corporation  
Virginia C. Quay  
Ghulam & Nazi Quraishi  
Abraham A. & Senta A.  
Raizen  
Jeanne & W. Randall  
Catherine A. Randolph  
Aarthi Rao  
Belva H. Rasmussen  
George & Mary Raymond  
Kathryn M. Reardon  
Linda K. & John Rebane  
Betty A. Reddy  
Erick & Jane Reeber  
Charitable Fund  
Edward W. Reed  
Patricia Rehbein  
Mary & Reynold Rehwaldt  
Dr. John R. & Janice L.  
Reichert  
David Reichow  
Joseph & Sharon Reid  
Mary & Virginia Reid  
Catherine Reilly  
Mr. John S. Reinhardt & Ms.  
Angela Vargas  
Mark Reis  
Judith & Christopher Reiss  
Marianne Remedios  
James & Sharon Rendack  
Janet Renz  
Debra Reynolds  
Kay M. Richardson  
Randolph E. Richardson  
Kathryn & Mark Richel

Susan & Kent Richey  
Jeannie M. Richgels & John  
C. Nelson  
Jerome J. Richgels  
Lynne L. Richmond  
Caroline Rickerson  
Ellen Rider & Stanley King  
Sandra Riecki & Keith  
Gunderson  
Patrick K. & Pamela L. Riley  
Gene S. Ringuette  
Daniel & Mary Riordan  
Steve F. Risso  
David J. Risvold  
Marilyn C. & Jeffrey C.  
Rivkin  
RMF Foundation / Richard  
M. Friedberg  
Inga H. Robbins  
Joe Roberts  
Curtis A. & Beverly Robinson  
Kay & Ray Robinson  
Scott & Terese Robinson  
Jan Roby  
Donald K. Rockenbach  
Dr. Gordon Rockswold, M.D.  
& Mrs. Ann Rockswold  
Rosemary Rockwell  
Elizabeth Betty Rodriguez  
Enrique Rodriguez  
Susan E. Roedl  
Francis & Rosemary Roehl  
Betsy & Ken Roering  
Mary C. Ronzani  
Elizabeth Rosen  
Gail R. Rosenblum  
Alvin & Diane Rostberg  
Elizabeth A. Roy  
Judy Royster  
Patricia Ruble  
Eric & Ameila Rudolph  
Tim Rule  
Benjamin T. & Barbara  
Rumsey  
Bridget A. Ryan  
Judy Ryan  
Michael L. & Carole J. Ryan  
Christine M. Rydel  
Michael L. Sabio  
Sabre Holdings Give Together  
Campaign  
Evan & Eleanor Sachs  
Judith Sachs  
Virginia C. Saft, M.D.  
Michal & Gregory Sagar  
Murray G. Sagsveen  
Kenneth C. & Kay L. Sahlin  
Larry Sales  
Knut J. Salhus  
Dianne M. Sandberg  
Bill Sandel  
Karen Sandy  
Santorini Restaurant

Dick Sarafolean  
James & Barbara Sarazin  
Stella B. Sargent  
Ann L. Sauter  
Richard L. Savage  
Mark D. Savin  
Mark D. Savoie  
Mrs. Margaret Scaief & Mr.  
Charles Scaief, III  
Jack & Jan Schaffer  
Margaret L. Schally  
Madelyn R. Schalow  
Paul K. Scherrer  
Lorraine M. Scheuer  
Peter & Denise N. Schlesinger  
Laura & Fred Schmelzer  
Jane Schmidt & Daniel Karl  
Russell H. & Elizabeth G.  
Schmidt  
Beth Schmieg  
J. M. & C. J. Schmitz  
John L. Schneider  
Marcella E. Schneider  
James Schoenemann  
Dorothy J. Scholtz  
Michael Schrader  
Raymond & Leola Schreurs  
Timothy Schroeter  
Judy & Anthony A.  
Schumacher  
Lawrence & Mary Schwanke  
Patricia & LeRoy Schwartz  
Monique E. Schwartzberg  
Lyall A. & Inez M.  
Schwarzkopf  
Randy K. Schwickert  
Belle B. Scott  
Jo Scott-Coe  
Helen W. Scully  
Stacy Sebasty  
Maija Sedzielarz  
Robert R. Seeman & Karin A.  
Jacobson  
David G. Seemann  
Marguerite E. Seflow  
Patricia K. Seflow  
Sandra & Mark Setterholm  
Stephen Sexton & Clare  
Macdonald-Sexton  
David A. Shack  
Seema Shah  
Susan & Mark Shanahan  
W.B. Shapira  
Janet & Irving Shapiro  
Sanjay Sharma  
Mary & Jack Shea  
William C. Shea  
Francis R. Sheahan  
Madison & Mary Sheely  
Ames S. Sheldon  
Paul Shelton  
Angela M. Shepherd

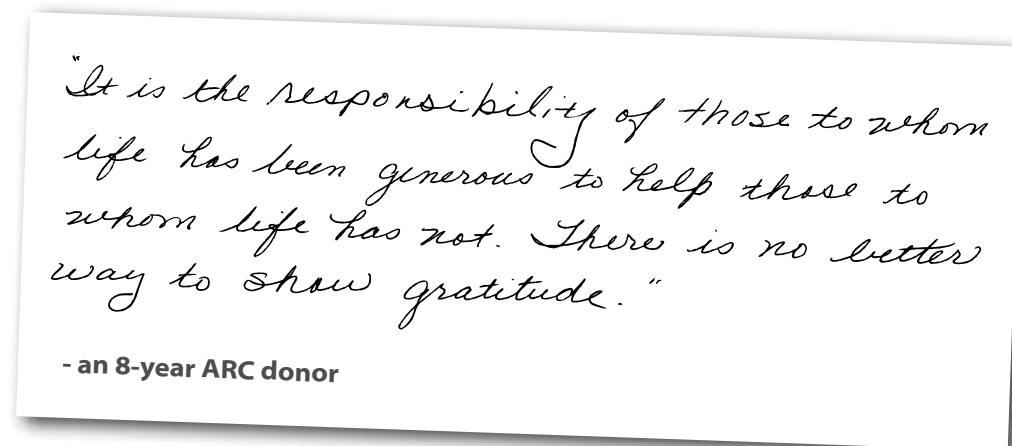
Lawrence A. Sherman  
/ Puritan Finance  
Corporation  
Andrea G. & Michael C.  
Shindler  
Ann Shubert  
Jill L. & Steven A. Sicheneder  
Farhan A. & Meher F. Siddiqi  
Kent Siderwirth  
Renato & Elaine Siewert  
Deanna & Paul Siliciano  
Mara Silins  
Dr. & Mrs. Farrell Silverberg  
Jennifer & Jay Silverberg  
Genevieve Simanovich  
Martha T. & Kenneth H.  
Simonsen  
Jillian Simpson  
Ring Sin  
Bonita M. Singal  
Kristine Siven  
Skagit Valley Food Co-op  
Susan & Richard Skare  
Bonnie L. Skelton  
Rebecca Skoler  
Robert Skottegaard  
Sharon A. & Richard H.  
Slettehaugh  
Curtis D. Sloan & Helen T.  
Duritsa  
Jody Slocum & Kurt J. Buetow  
Scott S. Slocum  
Richard S. Slowes  
Mary Jane Smetanka  
David & Stacey Smith  
Evelyn L. Smith  
Florence Gay Smith  
Foundation / Marion  
Smith  
Joan T. Smith  
Kevin H. & Lynn Smith  
Maureen Smith  
Patricia & Alexander Smith  
Richard & Isabelle Smith  
Sandra I. Smith  
Steven J. Smith  
William Smith & Mary  
Owieja  
Marilynn Snider  
Kerreu Soares  
Tanna & Mark Sobocinski  
Sandra L. & Robert A.  
Sommers  
Christopher N. Sonnesyn  
Rolf & Roberta Sonnesyn  
Donald K. Sovell  
Donald & Sandra Spahr  
Margaret Spear  
Harriet and Edson Spencer  
Foundation  
Kathleen M. Spillane  
Susan K. Spindler  
Sarah & Scott Sponheim  
Philip N. Springstead

Neal & Karen St. Anthony  
Saint Paul Academy and  
Summit School, Saint Paul  
MN  
Julie W. Stagliano  
Timothy J. & Sarah M. Stanga  
Richard T. Starr & Joanne Alt  
Kenneth W. Starring  
Mary & Richard Steege  
Kurt K. & Diana Steensland  
Pamela Stein  
Irene G. Steiner  
Jeremy & Linda Steiner  
Mary & Max Steining  
Theresa Stephen  
Susan & Phil Stephens  
Karen Sternal  
Janice E. Sterrett  
Margaret Stevens  
Margaret & James Stevenson  
Sarah A. Stevenson  
Jill Frost-Steward & David  
Steward  
Patricia L. Stinson  
Lisa Stortz  
Noel E. & Lois M Stratmoen  
Giles Strekel  
Katharine Stribe  
Colleen & Jerry Striegel  
Margaret M. Sturtevant  
Carol C. & Dave Suggs  
Marjeanne Sunde  
Jon E. Sundquist  
Andrea Sununu  
Arlene E. Swanson  
Stephen & Margaret Swanson  
Mr. & Mrs. Thomas B.  
Swanson  
Donald E. Sward  
Alan D. & Philothea T. Sweet  
Wiqar H. Syed  
Erik Tanouye  
Marjorie J. Tarr  
Renee Tasaka  
Carol A. Tauer  
Evalyn Taylor

Telechbush Family Fund  
Ten Thousand Villages  
John A. Tengwall  
Roxanne Thoeny  
Jeffrey M. Thole  
Kay A. Thomas  
Patricia Thomas  
Saul & Judy Thomashow  
Howard & Marcia Thompson  
Joan C. Thompson  
Virginia Thompson  
Ann B. Thornes  
Thomas L. Thul  
Jacqueline A. Thureson  
Jean M. Tilleson  
Alyssa B. Tochka  
Grid & Karen Toland  
Ellen Toll  
Shirley & Paul Tollefson  
Richard Tomassoni & Jane  
Gleason  
Calvin & Marjorie Tonsager  
Anna Lisa & Charles Tooker  
Janet R. Torrey  
Susan Toth & James Stageberg  
Agnes & Fred Town  
Ted & Sharon Trahan  
Warren & Diane Traiger  
Mark W. Traynor  
Michael & Dianne Trdan  
Alexander & Nancy Trembley  
Peggy Trezona  
Parker & Albert Trostel  
Lida Truchly & Vasil Truchly,  
M.D.  
Donald & Jane Truhlar  
Robert E. Truskowski &  
Maureen Gallen  
Thomas & Betty Turnham  
Alice A. Tuset  
Liz Tuzzolino  
William T. & Mary K. Udseth  
Melissa Ugiansky  
Blake Unger Dvorchik  
Carol A. Uppgaard  
Mary Ann Uram

John A. & Jennifer L. R.  
Urbanski  
Robert Urbiztondo  
Karen Utter  
Kit & Patricia Vail  
Peter & Akiko Vajda  
Mary C. Van Evera  
David M. & Lynn Vander  
Haar  
Faith Vandermar  
Deborah & William Vangelos  
Rebecca L. & John Varone  
Anastasia Vavoulis & Paul  
Bondhus  
H. Otto & Patricia M.  
Veinsreideris  
Thomas L. Venaas  
Emily J. Vennerstrom  
Sophie Vitells  
Suzanne & Boris Voh  
Paul R. Voigt  
Steven R. Vollrath  
Matthew Vollucci  
Donna Vonlehe  
W.C. Rasmussen-Northeast  
Bank Foundation  
Florence Wagner  
Robert Wagner & Cathy  
Trana  
Carol M. Wahi  
Mr. & Mrs. Robert Wahlstedt  
Martha F. Wailes  
Peggy Walgren  
Mischel B. Walgren  
Helen Rice Walker  
Patricia F. Walker, M.D.  
Carolyn L. Wall  
John W. Wallace & Ellen J.  
Rashbaum  
Nancy Jean Walsh  
Thomas W. Walsh  
Ann Walters & Elizabeth  
Langer  
Lesley & Rodney Walz  
Janice N. Wang  
Dennis Warner  
Thomas E. Warth

Ms. Carole Watkins  
Jennifer P. Watrud  
David C. & Judith L. Watt  
Timothy Watts  
John & Gracy Waugh  
Patrick Weber, M.D.  
Carol J. Weidt  
Dr. John Weigel, M.D.  
Robin Weil  
Laura & Hans Weinberger  
Donna Weinstein  
Lynne Weinzettel  
Idell & Lawrence Weisberg  
Marilyn Weiser  
Nancy C. Wells  
Phyllis & Paul Welter  
Mary J. Wenz  
Nancy Werner-Azarski & Jim  
Azarski  
Jean M. West  
Robert West  
Michael B. Westberg  
Katherine Westphal  
M.K. Whaples  
Ellen Wheeler  
James & Sarah White  
Halene Whitfield  
Timothy J. Wicker & Carolyn  
M. Deters  
Beverly & David Wickstrom  
Mike & Pam Wiehe  
Grace K. Wiggen  
Janet F. Wilcox  
Wendell Wilkes  
Margaret L. Wilkie  
E. A. & Sondra M. Wilkinson  
Frances & Frank Wilkinson  
Jean M. Wilkinson  
Mary Wilkinson  
Ms. Barbara E. Willford  
Robert Williams  
Susan G. Williams  
Raymond E. & Elizabeth  
Willis  
The Windhover Foundation  
Ellen & Othmar Winkler





Bruce C. Winslow  
 Eldred K. Winters & Jill Cisar  
 Kathryn & Steven Wirth  
 Steven Wolf  
 Frank & Judith Wolfe  
 Elayne & Marvin Wolfenson  
 Derek Wollenstein  
 Andrea Wolper  
 Mariel L. & Frederick H. Wolter  
 Jacob T. Wolters  
 Mimi Wong  
 Ms. Ruth D. Woods  
 Rev. Charles G. Workman  
 Betsy Wray  
 Alyce & Iwao Yamanaka  
 Dr. Ruth M. Yanagi  
 Virginia M. Yates  
 Eric G. & Lisa B. Yondorf  
 Carolyn & Richard Young  
 Ronald & Shirley Young  
 Kathleen Yung  
 Susan J. Zahner & Leon John Olson  
 Robert W. Zalaznik  
 Danuta M. Zaroda & Mark D. Whatley  
 Cheryl & John Zeiger  
 Mrs. LaVerne L. Zeigler  
 Mike & Margaret Zeitouny  
 James & Susan Zerwick  
 Baba Zipkin  
 Caroline Ziv

**+\$5.00**

Abbey of Our Lady of the Holy Trinity  
 Siyad Abdirahman Adan  
 Alvin & Bonnie Abrahamson  
 Joan & Jack Abrahamson  
 Ruth Abrahamson  
 Marilyn E. Abram  
 Marti Abts  
 Wayne W. & Phyllis J. Ackerman  
 Susan J. Ackerman-Murray  
 Alexcia & Paul Adams  
 Mary Adams  
 Paul Adams  
 Mr. Mervyn W. Adams Seldon  
 Marcia Addison  
 Massoud Adibpour  
 Mohammed Ahad  
 Sue Ahlstrom  
 Susanna D. Ahrens  
 Annmarie Aiello  
 Moiz & Durresamin Akhtar  
 Danny D. Albertson  
 George W. & Joyce H. Allen  
 Jimi P. Allen  
 Joan T. Allen  
 Karen & James A. Allen  
 Thomas D. Allen

Kathleen Almendinger  
 Stan O. Alperin  
 James Alvey  
 William H. Alvord  
 Gene & John Andersen  
 Astrid Anderson & Julie Glowka  
 Bradley J. Anderson  
 Cristopher L. Anderson & Maria D. Genne  
 Joann D. Anderson  
 John & Jeralyn Anderson  
 Moira C. Anderson  
 Patricia K. Anderson  
 Robert K. Anderson  
 Susan A. Anderson  
 Suzanne M. H. & Timothy K. Anderson  
 Vaughn N. Anderson  
 Vincent & Virginia Anderson  
 Katie Anfinson & Carlos Palacios  
 Patricia & Kamel Aosse  
 Frieda Arkin  
 Julie S. Arko  
 George C. & Mary Armes  
 Anna S. Arnar & Bernhardt S. Eidukat  
 Mavourneen Arndt  
 James & Judith Arnold  
 Tracy Arnold  
 Michael Arnst  
 Mary Ashe  
 Maureen L. Asleson  
 Patricia & Mark Aune  
 Darlene L. Avanzino  
 Elizabeth K. Bach  
 David & Joanne Backlund  
 Patricia S. & Arthur W. Bacon  
 Eva Baer  
 Lauren A. Baier  
 Robert Bailey  
 Arlene K. Baker  
 Nancy Baker  
 Rosalyn Baker  
 Sherrill Baker  
 Ms. V. Nadine Baker  
 Gary & Karen Bakken  
 Barbara Baldus  
 Barbara N. & Richard F. Baldwin  
 Michael Balinsky  
 Sharon L. Bangsund  
 Patricia A. Banks  
 William C. & Hazel D. Banks  
 Mr. & Mrs. Earl M. Banquer  
 Jane Baptist  
 Thuong N. Barasch  
 Myrtle H. Barden  
 Mary P. Barnard  
 Sharman D. Barrett  
 C. Westbrook Barritt & Winifred B. Walsh

Lynn C. Barron  
 Marie & Richard Barron  
 Grace Barry  
 Bernice Barta  
 Wolfgang & Michelle Bartel  
 Gregory W. Bartha, M.D.  
 John Barthol  
 Joseph T. & Kathryn A. Bartish  
 M. Cherif Bassiouni  
 David J. Bastien  
 Mohammad & Aghdas Batahae  
 Laura Battigelli  
 Phyllis & Wilfred Baumann  
 Martin Baumgold  
 Marian Bayer  
 Carolyn S. Beach  
 Ann B. & John R. Beane  
 Bernie H. & Patricia B. Beaver  
 Shirley Becker  
 Ruby J. Beebe  
 Harold A. Behnken  
 Brahim M. Bekreshi  
 Annette M. Belfiori  
 Deanna L. Belisle  
 Brian Bell  
 Mrs. Mary M. Bell  
 Jerry M. Beltt  
 Richard Benert  
 Lois A. Benge  
 Lani & John Bennett  
 Catherine J. Benson  
 Elizabeth I. Benson  
 Heather Benson  
 Jon & Judy Benson

Nancy P. Benson  
 Helen & James Benton  
 Teri L. Berglund  
 Amy L. Bergquist  
 Allen Bergson  
 Larry R. & Susan L. Bergstrom  
 Marcie Berky  
 Ramona V. Bernard  
 James F. Bernauer  
 Kristine A. Bertness  
 Nancy M. Berven  
 Biaggi's Restaurant  
 Arkad Biczak  
 Shirley P. Bierma  
 Dr. Thomas G. Birkey  
 Maria & Dale Biros  
 Inger Black  
 Kate Black  
 Mary Black  
 Arthur K. Blackburn  
 Connie Blackburn-Lowery & Scott Lowery  
 Helen S. M. Blackwood  
 Bette R. & Harold O. Blair  
 Susan L. Blake  
 Lynn & Jean Blaylock  
 Mitchell Block  
 Arline Bloom  
 Catherine G. Blosser  
 Rachel Blum  
 Bobby Boatner  
 Bethany B. Bobo  
 Cindy M. Boes  
 M.H. Boggs, Jr.  
 Florence C. Bogle

Sue Harting Bohn  
 Betty J. & Irving Boim  
 Michael & Karen Boland  
 Marie Boler  
 Nye O. & Garnett L. Bond  
 Ms. Diane R. Bongiorno  
 Kathy Bonnifield  
 Lynda L. Bordwell  
 Jan F. Borene  
 Larry & Cheryl Bornhorst  
 Margaret L. & Allan G. Bostelmann  
 Mary C. Bottum  
 Daniel M. Boudewyns  
 Marie J. Bouley  
 Albert Bouvier  
 Debra D. Bowman  
 Joan M. Brabec  
 Marilyn & Merlin Bradley  
 Maryjane G. Bradley  
 Nancy & Steve Braker  
 Eileen A. Branco  
 Donna Brandrup  
 Ms. Adeline Brandt  
 Claire Branning  
 Jeniffer A. Brasier  
 Sister Rita Braun  
 Mark Lewis Brecker  
 Vernett L. Bredow  
 Aviva Breen  
 Robert L. Brending  
 Jill Brennick & Michael O'Connell  
 Peg Breslin  
 Judith W. & Phillip C. Breunle  
 Wilbert J. & Linda A. Briggs

*"One writer said, 'many people walk in and out but true friends will leave footprints in your heart.' The day I read about ARC works on the Net, you became my friends and you left a foot print in my heart. Not only me but you are also leaving a foot print in the hearts of the people you are serving."  
 - ARC Supporter*

Wade C. Britzius  
 Phyllis & Sanford Brody  
 Kathryn Brogan  
 Diane Bromberg  
 Jack Brondum & Patricia McGowan  
 Katherine E. Bronner  
 Elaine K. Brooks  
 Geraldine Brooks  
 Dale S. Brown  
 Dorris I. Brown  
 Elizabeth A. Brown  
 Margo Brown  
 Melissa M. Brown  
 Robert C. & Bettye M. Brubaker  
 Terrine C. Bruder  
 Margherita Bruni  
 Francis & Virginia Brunner  
 Steve Bucher  
 Madeline Buck  
 Wolfgang F. Budich  
 Eugene Buhr  
 Maurice & Vera Bull  
 Linda Bullock-Merrifield  
 James H. Bulver  
 John & Amy Buonassisi  
 Elizabeth A. Burki  
 Diane L. Burry  
 David J. & M. Martha Butler  
 John D. Butler  
 The Bank of N.T. Butterfield & Sons Ltd.  
 Buy The Change  
 George A. Calder  
 Pamela Cale  
 Ann B. Callaghan  
 Daniel T. Callahan  
 Barbara & Timothy Callister  
 Ricky & Stafford Calvin  
 Georgiana & Arthur Campbell  
 Wilbur R. Campbell  
 Roald Cann  
 Brandi Canter & Gabriela Wirz  
 Thomas E. Carey  
 Anna V. Carlson & Eric Nelson  
 G. William & Cathy R. Carlson  
 Karin E. Carlson  
 Mark F. Carlson  
 Nancy & Allan Carlson  
 Susan Carlson Weinberg & Thomas C. Weinberg  
 Ilene L. Carpenter  
 Matthew & Susana Carpenter  
 Mousa Carpenter  
 Patricia A. Carpenter  
 Ray & Patricia Carpenter  
 Stephen Carpenter  
 Gareld & Louise Carpentier

Nancy & Barry Casper  
 Jennifer A. Cassettari  
 Tirso R. Castillo  
 Betsy Caulkins  
 David F. Cavanaugh  
 Delbert & Nina Cecchi  
 Wanda L. Chancellor  
 Grover I. Chapman  
 Dr. Jessalyn L. Charles  
 Bonnie A. Chase  
 Constance & Robert Chase  
 Agnes & Alexander Chen  
 Dr. Chihsing Chen  
 Eric W. & Victoria Chen  
 Terry Cherner  
 Joshua Cherniss  
 Dr. Morris J. Cherrey  
 Charyl A. Cherryhomes  
 Joan Chetwynd  
 Andrew Chidester  
 Ying Fan Chong  
 Ann Chopin  
 Katherine Chowning  
 Ruth M. Chrissinger  
 Rebecca Christ  
 Laura G. Christensen  
 Nisse Christopherson  
 Russell Chrysler  
 Carl Churchill  
 Nyahon Chut & Xavion Turey  
 City of Seattle Combined Charities Campaign  
 Bradley V. Clark  
 Mike Clark & Arlene Waksberg  
 Dr. David J. Clark  
 Kevin M. & Susan M. Clark  
 Myrtle Clark  
 Rachel Clark  
 Richard & Deborah Clark  
 Thomas W. & Susan M. Clark  
 Courtney M. Clarkson  
 Gerald W. & Shirley A. Clary  
 Becky D. Claypool  
 Carolyn S. Clements  
 Jim & Mindy L. Clesas  
 Andrew R. & Susan Cleveland  
 Cliché Boutique  
 Rebecca Coburn  
 Margie M. Coffman  
 Ronald F. Coffman  
 Thomas & Maria Coffman  
 Beverly J. Cohen  
 Jessica B. Cohen & Bruce D. Campbell  
 Stephen B. Cohen  
 Susan Colby  
 Catherine C. & Dan P. Cole  
 Kenneth F. & Nancy L. Cole  
 Carolyn C. & John W. Collison  
 Diane M. Collison

Senta & Joseph Colombo  
 Connie Comford  
 Mary Sue Comfort  
 Donald & Golda Compton  
 Carol K. Connelly  
 G. Dennis Conroy  
 Mitchell L. Cook  
 Thomas W. Cook  
 Virgia L. Cook  
 Marian & William Cooke  
 M. S. Cooley  
 Sarah Cooley  
 Nicole Cooper  
 Tara C. & Thomas W. Cooper  
 Lucille Coopersmith  
 James B. & Patricia R. Corbett  
 Edward W. Corcoran  
 Marguerite Corcoran  
 David & Jeanne Cornish  
 Edward F. Corwin  
 Ms. Mary Coss  
 Dennis M. Courtney  
 Carlin & Denise Covey  
 Kevin Cox  
 Chelsea Coyne  
 Tessa Craib-Cox  
 Esther Cramer  
 Joanne Cramer  
 Marion G. Crandall  
 Mr. & Mrs. Geoffrey Crofts  
 Crooked Spoon Café  
 Amanda Crozier  
 C. William Crummett  
 Favia L. Cruz  
 Richard Cucci  
 Arthur E. & Beryl C. Cummings  
 Megan C. Cummings-Krueger & David A. Krueger  
 Myron & Mabel Curry  
 Mark Curtin  
 Ann P. Cusack  
 John C. Cushing & Martha E. Joy  
 Karin Dahl  
 Richard M. & Marjorie R. Dahlager  
 Kristina Dahlen  
 Eileen Dahlin  
 Karel R. & Hermine J. Dahmen  
 Eleanor Daly  
 Edward & Esmelita Damba  
 Hoi Dang  
 Julie Daniel  
 Arline Darr  
 Bradley H. & Christine J. Davis  
 John R. Davis  
 Lois R. Davis  
 Merrill L. & Jane Davis

Sarah L. Davis  
 Susan A. Dawkins  
 David G. De Roo  
 Margot De Wilde  
 John E. & Patricia De Wolf  
 Katy A. Dealy  
 Mary J. Decatur  
 Amy Decker  
 Michelle & David Deeter  
 Mary J. Deever  
 Charlotte M. DeFrance  
 Liana Dekhtyar  
 Clement F. Delahun  
 A. P. & David DeLong  
 Robert L. Delorme  
 John E. Denaro  
 Ann L. Denton  
 Rolland & Arletta Derby  
 Stewart & Sheila Derechin  
 Sean Deshields  
 Linda Deshler  
 Mark & Penny Destache  
 Nancy Devitt & Richard Chase  
 Greg J. Dewitt  
 Michael L. DeYoe  
 Susan Dicker  
 Mel Dickstein  
 Wendy Diedrich  
 Celia B. Dillenberg  
 Laura A. Dillon  
 Richard W. Dillon  
 A. William & Karen R. Dix  
 Mary M. Dobmeier  
 Lyn L. Dodd  
 Dr. & Mrs. Gordon R. Dodge  
 Mildred M. Doering  
 Mary Dojnik  
 Michael Dommermuth  
 Guru O. Dorje  
 Julius Dorsey  
 Anne Dorweiler  
 Richard & Jean Doub  
 Merrilyn M. Dow  
 Joni & John Doyle  
 Joseph Drogo  
 Leah & Chuck Droubie  
 Julia Drozd  
 Edward Dube  
 J Robert Dube  
 Stephanie Z. Dudek, Ph.D.  
 Sophie Dudovitz  
 David Dudycha & Dorle Vawter  
 Nicole Duerr  
 Mary M. Duffield  
 Jeffrey & Jorja Dufresne  
 Lillian M. Duman  
 Nancy Duncan  
 Robert W. Dunker  
 Betty R. Dunn  
 Anne Dunne

Jacqueline Dupon  
 Mr. & Mrs. James A. Durbin  
 Marianne E. Durkin  
 Mary Dutke  
 Lisa Duvich & Frederick Belo  
 Jennifer A. Duyanen  
 Ben Dyer  
 Mary T. Dziennik  
 Richard B. Eager  
 Ecolab, Inc.  
 Stuart D. Edwards  
 Olivia C. Efteland  
 Ann E. Eggebeen  
 Robert R. & Lorraine Ehrich  
 Michael Ehrlich  
 Nathan Ehrlich  
 Barbara Eiger  
 David Eisen & Laura Vojvodich  
 Timothy J. Ekdom  
 El Méson Bistro  
 Libby Elbaum  
 Robert Elhai  
 Steven Elkins  
 Corinne T. Ellingham  
 Scott & Rose Elliott  
 Rebecca Emery  
 George E. Emrick  
 Valerie Eng  
 Christian A. & Mary A. Engen  
 Shelly Enhelder  
 Alyssa Erickson  
 Annerhe Erickson  
 Carole Y. Erickson  
 Darrell L. Erickson  
 Karen B. Erickson  
 Karin Erickson  
 Kim M. Erickson  
 Roberta A. Erickson  
 Patricia C. Erkel  
 Ruth Erkkila  
 Joanne G. Erler  
 Betty J. & Henry W. Ernst  
 Jay Erstling & Pixie Martin  
 Martha Evans & Richard Voorheis  
 Vickee Fangchen Nelson  
 Michael Faria  
 Norma L. Farquhar  
 Karen R. & James R. Fassett-Carman  
 Robert A. Fears  
 David & Nina Feinberg  
 Jean S. Fekety  
 Gordon L. Felland  
 Rebecca Felling & J. P. Felling  
 Grace Fenne  
 Stanley J. & Doris Fennessy Foundation  
 Kathleen M. Ferguson Quinn  
 Ashli Ferrano  
 Emily Fiegenschuh



Raymond J. Fields	Curt Franzmann	Joan Gilshannon	Bayle Greenberg	Karen Hansen	Sandra S. Heredia	Leonard Humphreys USA Ret. & Sally Humphreys	Maryl & Timothy Jordahl	Barry King & Catherine MacDonald	Floyd & Geraldine Krueger
John E. & Helen E. Finch	Greg & Dorris Freeman	Jack Gindi	Suzanne Greenberg	Allen & Lorraine Hanson	Barbara Herget	Lillian A. Hunt	Rachel & Jim Jordan	Kaye H. Krueger	Kaye H. Krueger
Barry S. Finkel	Wokie C. Freeman	Give with Liberty	Annice L. & Steven D. Gregerson	Howard & Carol Hanson	Michelle Herrick	Alma V. Hunter	James R. Jorgen	Betty E. King	Michel S. Krug
Betty & Max Finkel, M.D.	Patti W. Frisch	Gerard & Sandra Gix	Carol Gregorson	Floanne S. Hanson	Sue Herrmersy	Steven D. Hunter & Gail A. Antonson	Paul S. Jorgensen	Mary & Thomas King	Mary G. Kruser
Jodi Finkel	Arnold M. Frogel	Debra S. Glassman	Dan F. & Dawn G. Greimel	Gordon & Patricia Hanson	Adele S. Hersey	George L. Joseph	Thomas C. Kinne	Thomas C. Kinne	LaVonne E. Kuchenmeister
Hyman Finkle	M. Joan Froh	Mary Gleason	Elaine P. Griebenow	Robert A. Hanson	Lawrence Hershman & Amy Turim	John A. Joseph	Susan L. Kinneberg-Wittcoff	Steven A. & Roxanne Josephs	Melvin & Juanita Kuethe
Carolyn S. Finley	Annette Frost	Lynn A. Glesne	John C. & Jane B. Griffith	Kent & Judith Harbison	Lorraine B. Hertz	Steven A. & Roxanne Josephs	James & Janell Kinsel	Tatjana Jovancevic	John Kuhlman
Patrick D. Finnegan	David Fuder	Rev. & Mrs. Charles P. Godbey	Sharon C. Grimes	Naomi Harbottle	Faith Herzog	Spencer H. Kircher & Diana Arnett	James Joyce & Jan Zindt	Barbara & Gregory Huwe	Jean Kulczycki
Charles Firth	Rev. & Mrs. Glenn S. Fuller	Rebecca Goddard	Patricia A. Grinyer	Deborah J. Harley	Carolyn A. Hess	Patricia A. Kirchoffner	Suzanne & William Joyce	Anthony Indelicato	Mary C. Kumhera
Charles Fischer	Michael Furuta & Diane Sakai-Furuta	Linda & Glenn Goecke	Michael & Ana Patricia Groeschel	Mary Harpin	Richard Hevener	Thomas Kirkpatrick	Grace M. Joyslin	ING	James E. Kurle
Cherolyn Fischer	Alfrieda M. Gabiou	Rosemary A. Goff	Cheryl & James Groettum	James Harris	Robert W. & Louise F. Hewitt	Cynthia & Robert Kish	Diane E. & Thomas J. Judge	Carl W. Ireland	KW Botanicals
Gary W. Fischer	Nancy L. Gajewski	Eugene N. Gold	Hershey Groff Jr	Nicholas Hartle	Donald P. Irish	Elizabeth La Fontsee	Richard M. Julin	Donald P. Irish	Elizabeth La Fontsee
Arthur & Virginia Fish	Bruce & Patience Gall	Heidi S. Goldfein	H. Don Gronbeck	Linda & Alan Hartman	Mary Irons	Jim & Pat Laabs	Marie E. Isler	Mary S. Hilles	Jim & Pat Laabs
Richard G. Fish	Thomas Gallagher	Elaine R. Goldman	Erwin & Arlis Grossman	Richard W. Hartmann	Marie E. Isler	Jordan & Sandra Laby	Mary H. Jacker	Prasanga Hiniduma-Lokuge	Jordan & Sandra Laby
Jean E. Fishbeck	Josephine Gallo	Shirley & William L. Goldsmith	Sue & Elverne Grove	Margaret & C. Arthur Harvey	Mary H. Jacker	Joshua E. & Robin Lackner	Anthony & Michele Jackson	Nora E. Hoaglund & Kent D. Myhrman	Joshua E. & Robin Lackner
Linda & Robert Fisher	Gina Gamage	Freya Goldstein	Kimberlee Grover	Ruby C. Hass	Anthony & Michele Jackson	Linda D. Lade	Barbara M. Jackson	Nora E. Hoaglund & Kent D. Myhrman	Linda D. Lade
Leslie E. Fishman, M.D. & Susan Fishman	Rose & Jack Gansky	Janice L. & Jules A. Goldstein	Robert Grover	Ruth L. Hass	Barbara M. Jackson	Jane & Garland C. Lagesse	Shirley & Bill Jackson	Fern Hauck & Gabriel Finder	Jane & Garland C. Lagesse
Barbara J. & Phil Fleming	Joseph Gantman	Betty L. Goodman	John Grunick	Fern Hauck & Gabriel Finder	Shirley & Bill Jackson	Sherry & Gary Lampman	Reynold & Else Jacobsen	Harriet Hausman	Sherry & Gary Lampman
Maralyn W. Fleming	Maureen Garcia	James Goodrich	Homer & Hilda Grunz	Kate Havelin & Leo Timmons	Reynold & Else Jacobsen	Mary C. & Henry D. Lancaster	Donald & Helen Jacobson	Kate Havelin & Leo Timmons	Mary C. & Henry D. Lancaster
Richard H. Fleming	Gary M. Gardner & Helen Q. Kivnick	GoodSearch	R. Philip & R. Joanne Guillery	Maria D. Havenaar	Donald & Helen Jacobson	Carol Landes	Sally G. Jaquet	Maria D. Havenaar	Carol Landes
Arlene G. Flemmer	Charles Garetz	Nancy & Ray A. Gordner	Charles L. Gunderson	Kay E. Hawbaker	Sally G. Jaquet	Cindy Landis	James O. Jaeger & Tanya Rennie	Kay E. Hawbaker	Cindy Landis
Lauretta M. Flohr	Patrick Garvey	Caroline Gordon	Jennifer Gunn	Susan Haworth-Hoepfner	James O. Jaeger & Tanya Rennie	Maurly & Julie Landsman	Donna J. Kamann	Susan Haworth-Hoepfner	Maurly & Julie Landsman
Hilde & John Flynn	Regina Garvey	Christine & Bob Gordon	Katherine C. Guptil	Terri M. & John C. Hawthorne	Donna J. Kamann	Nancy & Stephen Lane	Russell R. Kania	Terri M. & John C. Hawthorne	Nancy & Stephen Lane
Ruthie Flynn	Sieglinde Gassman	Maria & Sydney M. Gordon	Edward Guzek	Julia A. Hays	Russell R. Kania	Judith Lang & Lynton Land	Rebecca A. Kaplan	Julia A. Hays	Judith Lang & Lynton Land
Susan C. Flynn	Jay A. & Marcy J. Gast	Kathryn & Don Gorham	D. James Hadley	Colin Hazard	Arnold & Shirley Kaplan	Jo Larabee	Arnold & Shirley Kaplan	Colin Hazard	Jo Larabee
Arline W. Fobes	Sigmund Gast	Timothy Gormley	Mary L. Haffner	Mary Hazelton	Mr. Kent Karraker	Richard & Louise E. LaRosa	Mr. Kent Karraker	Mary L. Haffner	Richard & Louise E. LaRosa
Sharon Fodness	Joan Gates	Katherine & Ignacio Gotz	D.W. Hagen	Barbara & Tim Healy	Naomi C. Karstad	Gerald D. Larsen	Naomi C. Karstad	D.W. Hagen	Gerald D. Larsen
Don & Charlene Follett	Audrey Gay Geist & Raymond Geist	Michael Gould	Barbara Hagenson	Francine Hedberg	Fred Karstedt	Brian Larson	Fred Karstedt	Barbara Hagenson	Brian Larson
Leslie J. Foote & Stanley W. Pollock	Sara Gayer	June E. Grade	Mrs. Georgia Hagerty	Elizabeth J. Hedstrom Khan	Mr. & Mrs. Norman H. Kass	Ting Ting Larson Cheng & Eric Larson	Mr. & Mrs. Norman H. Kass	Mrs. Georgia Hagerty	Ting Ting Larson Cheng & Eric Larson
Jo Ann Ford	Lois E. Geib	Doris Graeber	Jonathan Hahn	Matthew J. & Susan J. Hedstrom	Mary Jo Kasten	Mary E. Larson	Mary Jo Kasten	Jonathan Hahn	Mary E. Larson
Carl & Julie Forderer	O. Dolores Geisel	Kathleen M. Graham	Joseph Hahn	Anne Heffelfinger	Karen & Irving Katz	Sara M. Larson & Kent Roper	Karen & Irving Katz	Kathleen M. Graham	Sara M. Larson & Kent Roper
Kay B. Forest	Howard & Eunice Gelb	Mary Elling	Lowell Hahn	Ms. Emma Heger	Phyllis Katz	Susan J. Larson	Phyllis Katz	Mary Elling	Susan J. Larson
Mary Ann Forseth	Dr. Renee L. Gelman	Donald J. Granberry	Albert L. & Virginia T. Hale	Catherine M. Hegg	Doris J. Katzen	Curtis R. Lashbrook & Christine M. Gallagher	Doris J. Katzen	Dr. Renee L. Gelman	Curtis R. Lashbrook & Christine M. Gallagher
Marjorie A. Forshtay	Carroll George	Arlene & Albert Grand	Cherie Hales	Catherine M. Hegg	Esther Kaufman	Camille R. & Louis A. Latzer	Esther Kaufman	Carroll George	Camille R. & Louis A. Latzer
Lawrence Forte	K Wilfred & Margit Gerhart	Alice Mae Graner	Jean Haley & Joel Clemmer	Peder L. Hegland	Louise Kaufman	Rosalie K. Lavelle	Louise Kaufman	K Wilfred & Margit Gerhart	Rosalie K. Lavelle
Gail M. Fowler	Jill L. Gerlach	Sally L. Grans & Ronald Korsh	Linda D. Hall	Frank Heinze	R. Marianne Kaufmann	Patricia Lavery	R. Marianne Kaufmann	Jill L. Gerlach	Patricia Lavery
Helen & Charles Fowler	Ursula & Luther Gerlach	Joy Grant	Hall Realty	Barbara A. Held & Linda M. Smith	Ira Keer & Maryam Yusefzadeh-Keer	James & Deborah Lavoie	Ira Keer & Maryam Yusefzadeh-Keer	Ursula & Luther Gerlach	James & Deborah Lavoie
Rebecca Fox	Hendrik J. Gerritsen	Geraldine A. Graves	Valborg Hallan	C. David Helgen	Nathalie Kehoe	Jeanne B. Lawrence	Nathalie Kehoe	Hendrik J. Gerritsen	Jeanne B. Lawrence
G. Foy	Mildred V. Gertman	Thelma Graves	William & Kathryn Hallberg	Lonnie & Stefan Helgeson	Cherif Keita & Maimouna Toure	Milegua F. Layese & Paul R. Bloom	Cherif Keita & Maimouna Toure	Mildred V. Gertman	Milegua F. Layese & Paul R. Bloom
Rita Franchett	Janet L. Gervolstad	Ellen Gray	Heidi J. & Steven M. Hamilton	U. V. Henderson, Jr. & Evelyn Henderson	Richard & Joan Kelley	Albert T. Layman	Richard & Joan Kelley	Janet L. Gervolstad	Albert T. Layman
Pat & John Francis	Barbara A. Getchell	David M. Graybeal	Edward F. Hammel	Col. Stephen Henley (Ret.) & Ms. Helen Henley	Susan C. Kelley	Jeanne Le Fevere	Susan C. Kelley	Barbara A. Getchell	Jeanne Le Fevere
Ardella E. & Richard E. Frank	Charlotte & Earnest Gibson	Dawn Greaney	Joseph & Linda Hammons	Ailys L. Henningson	Linda Kelly	Sheri Lear	Linda Kelly	Charlotte & Earnest Gibson	Sheri Lear
Austin C. & Carole T. Frank	Herbert H. & Doris E. Giesen	Alison Green	David Handley	Mrs. Lucille E. Herber	Richard J. Kelly	Raymond J. Leaver	Richard J. Kelly	Herbert H. & Doris E. Giesen	Raymond J. Leaver
James A. & Ruth O. Frank	Christine A. Gilbertson	Carol & Fred Green	J.E. & D.K. Hanks	Kristin Hanneman	Karen & Thomas Kempe	Thomas Lederer	Karen & Thomas Kempe	Christine A. Gilbertson	Thomas Lederer
Barbara Frankel	John E. Gilcrease	Charles R. & Marilyn F. Green	Kristin Hanneman	Connie Hansen	Joanne I. Anderson Kendrick	Carol Lee	Joanne I. Anderson Kendrick	John E. Gilcrease	Carol Lee
Mabel E. Frankenstein	Arlene & Garth Gillett				David E. & Wilma T. Kennell	Ms. Eileen Lee	David E. & Wilma T. Kennell	Arlene & Garth Gillett	Ms. Eileen Lee
Irma Franklin	Barbara B. Gilliland				Joann R. Kenney	Ginny E. Lee	Joann R. Kenney	Barbara B. Gilliland	Ginny E. Lee
Walt & Dinah Franz					Edward R. Kent	Adella Lefto	Edward R. Kent		Adella Lefto

## *In Memoriam:* Larry Darby

Larry Darby lived his life with passion, devotion and heart and that part of him touched everyone he knew. When Larry passed away in May, the American Refugee Committee received many generous gifts in his memory. It was clear from the messages sent with them just how important he was to so many people. Larry is survived by his wife Walda Roseman, Vice Chair of ARC's Board of Directors.

*“We make this contribution in memory of Dr. Larry Darby, a man of formidable intelligence and greatness of spirit who lived his life with verve and dedication.”*



Dennis Levendowski & Lisa Knazan	Anita Makar	Brian P. Meisel	Esther Mork	Deborah Niebuhr	Irene Palm	Richard & Carole Poole	Aleta J. Roberts	Aaron D. Rutzick & Abigail C. Fenton	Kenneth G. Schivone
Marilyn & Mark Levinger	John R. Maki	Norma W. Melbostad	Charles Morris	Betty J. Noble	Nancy & Kenneth Palmer	David & Oneita Porter	Sue Roberts	C. Fenton	Judith A. Schlichting
Rev. Harriet M. Levy	Abam Mambo Doh	Richard & Josefa Melhorn	Virginia F. Morse	William A. Noble	Deb Pangerl	Heather L. Porterfield	Joseph W. Robinson	Carole & Roger Rydberg	Gwendolyn Schmid & Donald Schmid, Jr.
Lorraine & Eugene Levy	Ellen Mamer	Bernice A. Mennis	Olga M. Mortensen-Ohm	James D. Noe	Victoria Paprocki Kent & Robert Kent	Shannyn J. Potter	Charlotte L. Robledo	Ruth M. Saari	Robert & Joyce Schmidt
Laura Lewis	Jeanne & Ronald Mamer	Ralph Mensch	Theresa Morton	Les Noell	Mary A. Pardee	Robert E. Powell	Carroll & Ann C. Rock	Carol Sabersky	James W. Schmitt
Ms. Jeralyn P. Lewitz	Ann C. Manning	Nancy Menzin	Marcela T. Moschcovich	Nancy Jo & Donald W. Nord	Nancy Parke Finney & Ernest Finney	Carolyn J. Pozzini	Laurie Rockman	A Sachs	Liisa & Steven Schmitt
Eleanor & Myron Lieberman	Carol R. Manussier	Sara E. Messier	Marsha G. Mose	Audry L. Nordwall	Andy Parker	Aline & Merlyn E. Prentice	Peter I. & Jane E. Roda	Raymond & Val Sachs	Phyllis S. Schmitz
Donald R. Liebeskind	Nina M. Manzi	Arnold E. Messner	Helen Moshak	Nina Norum	Harriet J. Parker	Sharon J. Pressler	Bernard N. & J Eileen Rodel	Jason Logan King Sack	Jeff Schneider
Robert P. & Shirley R. Liesch	Randolph & Nancy Mapp	Anna C. Meyer	Matthew Mosher	Christopher J. Noth	Richard W. Parnell	William H. & Marjorie F. Pressly	Dr. George Rodgers, Jr. & Dr. Tania Condurache	John Sagan, Jr.	Paul & Virginia Schnitt
Bruce & Wendy Lietzow	Omar & Susan Marei	Edwin Meyer	William J. & Louise P. Mosher	Rita E. Novak	Mark & Cossette Parriott	Tim & Michele A. Price	Ethel & Ferdinand Rodriguez	Barbara Sakurai	Sarah Schoolcraft
Eady Burke Lillquist	Randi Markusen	Jerome Meyer	Paul A. Moss	Mr. Irving G. Nudell & Ms. Charlotte E. Nudell	Patti & Tom Parson	Perry Prince	Susan J. Roe	Lance Salisbury	William G. & Joanne R. Schossow
Wilma J. Lilly	Donald D. & Marjorie Markwardt	Paula & Ronald Meyer	David & Janice Mouton	Mary Nudell & Dean Lee	David P. Parupsky	Princeton Frame & Art	Barbara N. Roecker	Baree J. Sampson	Albert V. & Lucille R. Schroder
Bernadette & Gordon Lindholm	William Marshall	Bette J. Mezzenga	Jeanne H. Mugge	Harold Nyberg	Lynn D. Patinkin	Nora Principe	Jodi S. Rogness	Marya Samuelson	Mark Schubert
Bruce A. & Kris M. Lindner	Judith A. Martens	Judith & William P. Michaels	Carol F. Mulcahy	Mary & Mark O'Brien	Christie S. Paulson	Kathleen & Eugene Prodzinski	Judith L. Rohde	Hugh W. & Barbara M. Sanborn	Scott C. Schuck
Lois & Harley Lindus	Charles W. Martin	Kim M. Mickelson	Mark A. Mullin	Karen O'Connor & Daron Walker	Carol Pavlish	Sharon Proskin	Gail Rojas	Edgar Sanchez & Jerry Francoeis	Nancy J. Schuler
Diane V. Link	Jane J. Martin	Philip P. & Connie R. Micklin	Richard & Catherine Mulvey	Luke E. O'Connor	Alison S. Payne	James J. Pruss	Linda E. Rolf	Dianne Sanders	Camae & Mark Schultz
Ms. Nancy Shelp Linsner	Arlene Martin	Linda Mielke	Diane L. Mundt	Susan O'Connor	Robert S. Payton	Mr. Herbert G. Purdy & Ms. Virginia Purdy	Salvatore & Genevieve S. Romano	Adele F. Sands	Ralph & Carol Schultz
Charles S. Lippa	Lois Martin	Christine L. & Matthew D. Mignogna	George & Judy Murakami	Mike & Connie Odden	Arlyce L. Pearce	William E. Quick	Patrick & Kathy Romey	Carol M. Sandstrom	Shirley Schultz
Stevan T. Lister	Richard & Janet Maser	Anne & Eugene Miles	Larry Murakami	Roberta W. O'Dell	Brent Pearson	Mary C. Quinn	Sarah Rose	Carolyn R. Sandvig	Frances & Edward Schuss
Sarah & Leo Lobl	Sandra B. Mason	Laura H. & James G. Miles	Michele Murphy & Dorn Sichveland	Tamaki Ogata	Ron S. Pearson	George Rabasa & Juanita Garciagodoy	Jane Rosemarin	Alan Sankin & Teveia Barnes	Elizabeth & John Schwartz
The Lodges	Dean & Bev Massett	Barbara B. Miller	Christopher Mustain	Kenneth J. & Lynn E. Ogden	Yvonne Pearson	Harley & Lauretta Racer	Herbert & Ilse Rosenbaum	Meri E. Santos	Frederic G. & Ingeborg Schwarz
Jean London	Jeanne K. Massey & Richard P. Taylor	Catherine E. Miller	Gladys C. Myers	Dr. Joseph & Teryl O'Grady	Emelyn A. Peasha	Peter & Shannon Raeker	Steve Rosenberg	Susan A. Santos	Walter Schwarz
Mary Ellen Loney	Amy Matheny	Deborah L. Miller & William J. Lovegren	Mr. & Ms. William H. Myers	John O. Ogunkeye	Virginia M. Peck	Betty S. Ragan	George A. Rosenfeld	Martie J. Saphir	Margaret & Robert J. Schwob
Carla Long	Lotti Matkovits	Gordon G. & Theresa R. Miller	Michael Myrland	Alice Ohl	Ms. Joyce Peltzer	Denice & Eugene Rahn	Donna Rosenquest	Sapor Café	Janice R. Scofield
Ms. M. Angelica Lopes	Thomas Matkovits	Harry & Lucia Miller	Minoru Nagaoka	Paul D. & Carol W. Ohlbaum	Thomas G. Penchoen	Mary E. Rains	Marvin & Marjorie Rosenstein	Calvin & Maria Satterfield	Diana L. & Thomas Scott
Steven Lorch & Susanna Kochan-Lorch	Norma Matthias	Nancy B. Miller	Dana L. Nakasato	Wesley & Dolores Ohman	Raymona & James Pennington	Rebeca Ramos	Marvin & Marjorie Rosenstein	Constance M. Sattler	John H. Scott
Stanley & Ann Lorek	Kirk Mattson	Raymond & Joan Miller	Vigna Nalliah	Jesse Okie & Mary Harrington	Joanna Pennypacker	Richard G. Ramsdell	Matt T. Rossell	Judith J. Saumweber	Leslie J. Scott
Mr. & Mrs. Robert Lorimer	Mona Lisa Mauricette	Michael R. Miner	Therese D. Naughton	Brice & Kristy Oldham	Mary K. Perrin & Donald J. Nelson	Charlotte Palmer Randall	Louis & Marilyn Rossman	Ellen Saunders	James Scruggs, Jr.
Ernest C. Lottman, Jr.	Anne L. Maxa	Minnesota State Bar Association	Birute Navickas	Mr. & Mrs. Hal Oleck	Perry & Carolyn Peskin	Jane Randolph	Harry & Marilyn Rovner	Maralee D. Savage	James Scruggs, Jr.
Gina Louise	Daniel & Karen Maxey	Bridget Nelson	Nancy K. Neale	Sara & Tom Olesker	Hazel I. Peterman	Ronald Rapallo	Susan M. & James Rowan	Rev. James M. Savides	Gladys Secunda
Virginia Loveland	Janis M. & Ralph S. Mayer	Clareyse E. Nelson	Nechama - Jewish Response to Disaster	Mason M. Olmsted	Dana Peters Guarin	Doris M. Rausch	Denise Roy	Jerome & Rosemary Scanlan	Kenneth Seemann
Robert & Gail Loveman	Ronald S. Mayer	Dorothy L. Nelson	Dorothy M. Olsen	Dorothy M. Olsen	Sarah M. Peters	Frank & Jane Reanier	Mildred & Zvi Rozenn	Elizabeth K. Scanlon	Ellen Seesel
Fran Lowell	Stan & Amy Mayer	Col. Ethel A. Nelson, USAF Ret.	Inez B. Olsen	Eric & Heidemarie Olson	Earline Petersen	Segwald Reckdahl	Jane Roznovsky	Rabbi Herman E. Schaalman	Sharon Segal Abelson & Samuel Abelson
Ellen F. Lowery	Linda D. Mayo	George M. Nelson	Eric & Heidemarie Olson	Gladys & Orwoll Olson	Jeane S. Petersen	James & Mary Redfield	Estelle R. & A. Irwin Rubenstein	Esther R. Schak	Judith & Richard Seitz
Jeffrey S. Lubbers	Manfred McArthur-BUILDER	Heather Nelson	Gladys & Orwoll Olson	Mae C. Olson	Nergis Petersen	Michelle S. Reed	Neal Rubin	Beverly J. Schauer	Doris K. Seldin
Edwin Lucey	Marvin McBain	Janice W. Nelson	Mary Claire Olson	Mary Claire Olson	Betsy J. Peterson	Belina Reisman	Carol M. Rucks	Carl J. Schenk	Jackson H. & Susan M. Sell
Randall & Peggy Ludtke	Elizabeth & Carleton McCambridge	Jeffrey A. Nelson	Patricia A. Olson	Sally & Charles Olson	Janet L. Peterson	Dan & Wanda Remiarz	Erik C. Rudeen	Winnie Scherber	Virginia M. Sellberg
Ruth M. Lunde	Judith I. Mitchell	Joy & Randy Nelson	Patricia A. Olson	Shirley S. Olson	Katie Peterson	Gerritt B. H. & Cato L. Renger	Kathleen M. Rundle	Mary T. Schertler	Alvin G. Schettler
Maribeth Lundeen	Anthony E. J. & Kathy P. Mitton	Lorena B. Nelson	Patricia A. Olson	Donna M. Olszewski	Lillian D. Peterson	Wynfred Russell	Steven E. Schier	Alvin G. Schettler	Steven E. Schier
Fern A. Lundgren	Maureen A. Mitton	Mark Nelson	Patricia A. Olson	William Olszewski	Nancy T. Peterson	Marjorie Russo	Beulah & Leon Schiller	Steven E. Schier	Beulah & Leon Schiller
Kathleen M. & Jarrod R. Lynch	Jenna M. Moeger	Marshall W. Nelson	Patricia A. Olson	Richard & Shereen O'Malley	Sara A. Peterson				
John & Barbara Lynskey	Mary & William Moeger	Tammy S. Nelson	Patricia A. Olson	Cynthia P. O'Neil	Shirley & Eugene Peterson				
Christopher S. & Susan M. Lyons	Ilene & Zoran Mojsilov	Warren & Arlyn Nelson	Patricia A. Olson	Barrie Orloff	Frederick L. Pfeiffer & Melanie A. Pores				
Susan Maas	Rev. & Mrs. Frederick Mold	Wilbur & Renee Nelson	Patricia A. Olson	John P. & Magdalen M. O'Rourke	Bradway & Sandra Phillips				
Robert J. & Nina K. MacAlister	Lois E. Molid	Evelyn Nerenberg	Patricia A. Olson	Alfredo Ortiz	Virginia Phillips				
Thomas MacAulay	Mike & Ann Mondloch	Elizabeth M. Ness	Patricia A. Olson	Joan & Terry Osell	Jessica & Jack Phinney				
Frederick & Linda MacDonald	Colleen & Thomas Montag	Gail Nevin	Patricia A. Olson	Michael K. & Connie J. O'Sullivan	Leanne Phinney				
Betty Y. Machida	C. R. & Veronica M. Moore	Cindy Newstrom & David J. Olson	Patricia A. Olson	Susan Esther Ouray	Irene Piccone				
Michelle & Daniel Mack	Hugh Moore	Dirk Neyhart	Patricia A. Olson	Ralph & Hannah Overholt	Linda Picone				
Sharon Mack	Joy & Robert McCleary	Shirley & Daniel Nickel	Patricia A. Olson	Richard & Shereen O'Malley	Debbie Pierce				
Margery J. MacNeill	Eileen C. McCormack	Catherine P. & Lola L. Nickens	Patricia A. Olson	Cynthia P. O'Neil	Carl Pietrantuono				
Carole L. Madland	Joseph & Mary McCue	Helene Nickles	Patricia A. Olson	Barrie Orloff	Barbara Pilling				
Steven & Judith Madole	Connie M. McDonald	Nicholas & Theodora Nicolandis	Patricia A. Olson	John P. & Magdalen M. O'Rourke	Madison Pleasant				
Jacquelyn Magee	J.L. McGillicuddy	Katherine J. Moore & Julie A. Schwalbach	Patricia A. Olson	Alfredo Ortiz	Nora Plesofsky				
Clarence & Debi Mager	Liana McGowan	Lynn Moore	Patricia A. Olson	Joan & Terry Osell	Judy & Steve Poe				
Judy & Peter Mahoney	Mary McHale	Murdock & Wendy Moore	Patricia A. Olson	Michael K. & Connie J. O'Sullivan	Heather Pollock				
	Mark G. McHugh	William Ray Moore	Patricia A. Olson	Susan Esther Ouray	Jill & Robert Pomroy				
	John H. Moore	Kristina Morden	Patricia A. Olson	Ralph & Hannah Overholt					
	Alice McIlvaine	Mary Morehouse	Patricia A. Olson	Suzanne Owens					
	Dr. Bob A. McIlwain	Jaime & Anna Moreno	Patricia A. Olson	Crystal Page					
	Thomas MacAulay	George Morgan	Patricia A. Olson	Trokon Page					
	Frederick & Linda MacDonald	Lucia T. Morison	Patricia A. Olson	Richard B. & Jamie G. Paisner					
	Betty Y. Machida		Patricia A. Olson	Joseph F. & M. Stephanie Palen					
	Michelle & Daniel Mack		Patricia A. Olson	Beth Palm					
	Sharon Mack		Patricia A. Olson						
	Margery J. MacNeill		Patricia A. Olson						
	Carole L. Madland		Patricia A. Olson						
	Steven & Judith Madole		Patricia A. Olson						
	Jacquelyn Magee		Patricia A. Olson						
	Clarence & Debi Mager		Patricia A. Olson						
	Judy & Peter Mahoney		Patricia A. Olson						

"THANK YOU FOR THE WORK IN PLACES THAT SEEM SO FAR AWAY TO ME. YOU INSPIRE ME TO THINK ABOUT WHAT I CAN DO TO HELP."

- ARC donor since 1999



*“Because I and my husband are refugees from the former Yugoslavia. We came to the USA in 1951. We know what it was like to be hungry.”*

**- Anton & Maria Strasser**

Marguerite & Edward Senninger  
Joan Sereda  
Mr. Richard Seroff  
Edan Shahar  
Mac A. & Rose Shain  
Anne Shainline  
B. Kathleen Shamp  
Richard D. Shane  
Duane L. Shaneyfelt  
Alfreda Shapere  
Joseph Shapiro  
Rae & Julius Shapiro  
Wendy Shapiro  
Allison Sharkey  
Conrad Sharpe  
Sheila L. Shaughnessy  
Stephanie A. Shaw  
Marie J. Sheck  
William F. Sheehan  
Julie Shekell  
Robert Shelley & Kristin Adler Shelley  
Judith S. Sherman  
Gordon & Ruby Sherwood  
Hazel R. & Lawrence W. Shesgreen  
Fumiko Shido  
Glenn W. & Sue Shifflet  
James & Priscilla Shoop  
Gail D. Shore  
Anna C. Shortall & R. Murphy  
Ida L. Showkeir  
Ann L. & Lionel Shub  
Alan Sicherman  
Patrice & Randall Siefert  
Carrie S. Siegel  
Harriet S. Siegel  
Monica Siems  
Marjorie Sigel  
Janis G. Silberhorn

Edwin B. & Marjorie P. Silverman  
Larry K. & Suzanne M. Silvey  
Joseph B. Simon  
Sidney Simon  
William F. & Nancy C. Simonsen  
Kathryn & Richard Simonson  
Lue Simopoulos  
Kimberlee Sinclair  
Sisters of St. Francis  
Fred Skinner  
Rose Ann & James D. Skirha  
Martha M. Skleder  
David J. & Janice Skogstrom  
Leonard & Jeanne Skolnick  
Nancy Louise Sloss  
Stephen E. Smaciartz  
Emma A. Small  
Rolf & Margrete Smeby  
Beth Smith  
Bruce & June Smith  
Bruce W. & Laura Smith  
Christa J. Smith  
Gary & Linda Smith  
Karen & Jeffrey G. Smith  
Luisa Smith  
Mandra G. Smith & Norris Langford  
Mary Smith  
Michael Smith  
Nancy O. Smith  
Robert F. & Susan P. Smith  
Stephen D. Smith  
H J. Snope & Nancy A. Peterson  
Misti R. Snow & James L. Dawson  
Herman Snyder  
Deborah & Reidar Soderholm  
Ann & Steven Soderlind  
Dag & Pam Sohlberg

Namoch Sokhom  
Gail P. Soldavini  
Ms. Janet W. Solinger  
Gail S. Soloway  
Patricia & Prachuab Soonthornprapuet  
Kenneth & Sue Sorenson  
Todd N. Sorlie  
Dolores M. Souba  
Jane Southwood  
Christine Soutter  
Charlotte J. Spaeth  
Ronald Spann  
Elaine & George Spencer  
Sandra Spieler  
Martin & Alice Spindel  
Marian L. Spitler  
Don & Janis Splitstone  
Tyron Spratt  
Jane J. St. Anthony  
Bobie St. Christopher  
Kenneth L. Stahl  
Michael & Pamela Stalpes  
Kristine M. Stamps  
Jean Staneslow  
Leicester D. Stanhope, III  
Ladi J. Stanisha  
John J. & June K. Stanley  
Arlene & Douglas A. Stansbury  
Emmett & Charlotte Stark  
Jane A. Starr  
Robert J. Stauner  
Philip F. Steber  
J. J. & R.M. Steenberg  
Pat Steffer  
Benjamin & Maxine Steinberg  
Carol M. Steinberg  
Paul & Sheila Steiner  
Sharron L. & Oren J. Steinfeldt  
Donald Steinkraus

Mark Stenoien & Sholeh Chatraei  
Herbert Stentzel  
Romana & Zenon Stepchuk  
Dyne Stephenson & Roberta Gibbons  
John Stern  
Naomi Stern  
Linda & George Stevenson  
David B. Stewart  
Beth & Aaron Stiner  
H. Keith & Sally L. Stinson  
David & Susan Stoddard  
Willis & Dolores Stoesz  
Mary Stoick  
Hans Stoll  
Barbara Stover  
Anton & Maria Strasser  
Gretchen Strate  
Barbara E. Straub  
Rosalind Straus

Andrew & Barbara Streifel  
Bertram & Lynne Strieb  
Donald & Leola Strom  
Allison F. Struck  
Susan & David Strulowitz  
Albert Strumpf  
Anne Sullivan  
Bruce W. & Roberta L. Sullivan  
Michael & Mai-Huong Sullivan  
Sheila J. Summerfield  
Joan Sundquist  
Marilyn B. Sussman  
Janet B. Svirsky  
Dell Swain  
Mr. Louie J. Swalby  
Kari G. Swan  
Daniel Swann  
Axel R. & Arlene A. Swanson  
Barbara Swanson  
John Swanson  
Judy & Steve Swanson  
William F. & Elizabeth Swanson  
David J. Swenson  
Gerard A. Swick  
Lorraine P. Swonger  
Julia Tang Peters & Michael Peters  
Vernon & Marilyn Tank  
Mr. James M. Tart, Jr.  
Mrs. June Taube  
Nicole Taylor  
Jeanne E. Teigen  
Frank E. & Karen J. Tejan  
Amanda Tempel  
Temple Israel/Interfaith Darfur Coalition  
Virginia Templeton  
Henry W. Tenbroek  
Bonnie J. Terrell

John Terwilliger  
Joseph Thiags  
Joyce H. Thielen  
Karen G. Thimmes  
Shirley M. Thom  
B. Charlene Thomas  
Joann Thomas & Douglas Nopar  
Aida Thompson  
Carrie Thompson  
Douglas R. Thompson  
Howard A. Thompson  
John & Donna Thompson  
Marion L. Thompson  
Maddie Thomson  
Scott Thomson & Ana Sacramento  
Roxann W. Thoreen  
Marie D. Thornburg  
Mary L. Ticiu  
Patricia Tieman & David Laurent  
Tierney Family Fund / Paul & JoAnne Tierney  
Joseph & Pamela Tikalsky  
Susan & James Tincher  
Kenneth Tobacman  
Sol W. Toder  
Fred J. Tolli  
Arlene Tom  
Roberta Tonnemaker  
Kathy J. Tonolli  
Michael W. Torp  
Robert L. Tortoriello  
Kelly C. Tracy  
Colleen P. & Charles E. Tralle  
Ngoc Tran  
Sharon & Joseph Travnika  
Mary Trawczynski  
Rudolph W. & Marybeth Trenton  
Jorge L. A. Trewartha  
Veerendra & Jie Trivedi  
Eugenie Trott  
Megan Trumper  
Elizabeth Tullis  
Patricia Turino  
James E. Turnure  
Eleonore A. Turpin  
Ms. Bonnie N. Turrentine  
Ruth C. Tussey  
The Two of Us Interiors / Marie & Terrance Schlink  
Virginia Uhl  
Caren S. Umbarger  
Rita Unz  
Samer N. Usmani  
Lawrence Usselman  
Donald & Ruth Utzman  
Alison Vaden  
Gloria L. Vallarino  
Dr. & Mrs. Jack M. Valpey  
Richard M. Van Bergen

Vanessa Van Bogart-Pardridge  
Vlatka Varga  
Veberod Gem Gallery  
Vasan Venugopalan  
Curtis D. Vermette  
Katie Verschelden  
Paula J. Vesely  
Paul Vesper  
Bernice Vetsch  
Thomas & Susan Viker  
Joyce H. Vincent  
Akbar M. Virmani  
Donajean Vitale  
Mary Voigt  
June & Ferdinand Volkert  
Susan N. Vonbank  
Lucia R. Vorys  
Ann Monique Vos-Rapoport & Edward Rapoport  
Nancy & James Voss  
Pauline Vu  
James G. & Doris A. Wagner  
Jean K. Wagner  
Curtis H. & Jane F. Wagoner  
Roger A. Waha  
Patricia L. & Larry Wahl  
Kenneth H. & Ruth D. Wait  
Debra J. Waite  
Carla B. Waldemar  
Richard & Janet Waldie  
Joaquin T. Walker  
Lauren Walker  
Patricia & Samuel Walker  
Theresa L. Walls  
Ann L. Walter  
Orville & Evelyn Wandersee  
Gail A. Wanner  
Elisabeth Ward  
Jennifer & Dale Warner  
Steve & Katie Warner  
Roger & Aila Wartell  
Suzanne M. Wasilczuk  
Sandra A. Waterman  
Marjorie K. Watson  
Karen M. Watters  
Elise Lee Wear  
F. Jean Weaver  
J. Richard & Margaret Weaver  
John C. Weaver, Jr., MD  
Ruth Weaver  
Bonnie & John Wedel  
A. DeWayne & Theo R. Wee  
Gerald B. & Priscilla S. Weeden  
Gerhard & Janet Weinberg  
Edward R. & Rina Weingold  
Patricia A. Weinke  
Joel Weisberg & Janet Watchman  
Gerhard & Janet Weiss  
Mary Jane Weiss  
Nancy Weis-Sanfo  
Annie Welch

John E. Welckle  
Ann Wells  
Gwen Welty  
Phyllis & Carl Wenell  
Susan Wennes  
Janet H. & Leroy S. Wenzel  
Jerry A. Werle  
Nicholas Werner  
Sarah T. Wertz  
Ellen Wersan & Timothy Sandry  
Lawrence & Daidre West  
Robin & Daniel B. Westacott  
Isabelle A. Westover  
Mary M. Whalin  
Willard E. White  
Douglas & Donna Wiedenman  
Jennifer Wig  
Martha Wiggins  
Robert O. Wilbur  
D. A. Wiles  
Amy & Andrew Willette  
Algareene & Leroy Williams  
Jody C. Williams  
Karen M. Williams  
Kat Williams  
Patricia & George Williams  
Patriciann Williams  
Harriet C. Wilson  
Howard & Miriam Wilson  
Katharine Wilson  
Constance & Larry Winbauer  
Kenneth S. & Linda J. Winer  
Donald & Lucinda Wingard  
Kelly Winjum  
Helen Winston  
Miriam L. Wise  
Ruthanne Wise  
Linda & David Woessner  
Lawrence A. Wojciak  
Cynthia Wold  
Joseph Wolf  
Virginia Wolff & Raymond Minnerly  
Helen Wolk  
Teddy & Laura Wong  
Darren Wong-Ward  
James & Emese Wood  
Therese L. Wood  
Betty Woodford Duty  
Jeannette A. Woodward  
Rachel Workman  
Wendy Wornham, M.D.  
Nancy & William Wright  
W. H. & Joyce E. Wright  
William S. Wright  
Nancy & Robert Wrobel  
Pangia Xiong  
William & Marie Yacullo  
Lynne Yadlin  
Drs. Eileen & Joel Yager  
Filiz Yargici

Mr. & Mrs. Harold E. Yarnell  
George A. Yochum  
Doris Yokelson  
Mary Youle & Philip Cohen  
Carol J. Young & Glenn Browning  
Nathan X. Yu  
Anne, Tom, Paul & Ellen Yuska  
Sandra & Ihor Zakaluzny  
Svetlana Zakharchenko  
Sandra Zakowski  
David B. Zander  
Leon R. & Wendy Zar  
Michael Zeldin  
Barbara A. Zepaltas  
Irum Ziauddin  
Martin & Kathy Zillman  
Marjorie N. Zimmerman  
Shirley L. & Peter D. Zimmerman  
Donna Zimmerman-Tremmel & Jon T. Tremmel  
Olga Zoltai

**In-Kind**

Acme Comedy Club  
Bachman's  
Biaggi's Restaurant  
Leslie Black Sullivan & Tom Sullivan  
Peter A. & Maura F. Brew  
Steven Brown  
Sonia & John Cairns  
The Capital Grill Restaurant  
Caribou Coffee Company  
A Chef's Production  
Cliché Boutique  
Cote Family Companies  
Chef Mike Phillips of The Craftsman Restaurant  
Cragun's Golf Resort  
Crooked Spoon Café  
Dunn Bros Coffee - Loring Park  
Duplex Restaurant  
El Méson Bistro  
Susan Fink & Tim McCall  
Barbara L. Forster & Lawrence Hendrickson  
Guthrie Theater  
Erin Hart & Paddy O'Brien  
Haskell's Wine Shop  
Simon & Avia Hawksworth  
The Historic Grandview Lodge  
Holiday Inn Express  
Holy Land Bakery & Deli  
Jeremy Iggers  
Jade  
JUUT Midwest, Inc.

Shawn Kearney  
Kincaid's Restaurant  
Matthew J. Lerner  
Lutsen Resort  
Svetlana Madzar  
Malt-O-Meal Company  
McCormick & Schmick's Restaurant  
Minnesota Opera  
Minnesota Timberwolves  
Clare Naughton  
Palomino Restaurant  
Park Square Theatre  
Robin Lee's Hallmark  
James Rustad  
Safari Express  
Salsa a la Salsa  
Santorini Restaurant  
Sapor Café  
Sokitumi Design  
The Tea Garden  
Tryg's Restaurant  
Veberod Gem Gallery  
West Indies Soul Food  
Daniel Wordsworth & Sandra Partridge  
Matt Workman  
Xcel Energy Foundation  
Xcel Energy Foundation  
The Yoga Pioneers  
United Nations Children's Fund  
United Nations Food and Agriculture Organization  
United Nations High Commissioner for Refugees  
Sonia & John Cairns  
The Capital Grill Restaurant  
Caribou Coffee Company  
A Chef's Production  
Cliché Boutique  
Cote Family Companies  
Chef Mike Phillips of The Craftsman Restaurant  
Cragun's Golf Resort  
Crooked Spoon Café  
Dunn Bros Coffee - Loring Park  
Duplex Restaurant  
El Méson Bistro  
Susan Fink & Tim McCall  
Barbara L. Forster & Lawrence Hendrickson  
Guthrie Theater  
Erin Hart & Paddy O'Brien  
Haskell's Wine Shop  
Simon & Avia Hawksworth  
The Historic Grandview Lodge  
Holiday Inn Express  
Holy Land Bakery & Deli  
Jeremy Iggers  
Jade  
JUUT Midwest, Inc.

**Government**

American Embassy- Pakistan  
American Embassy- Rwanda  
Columbia University  
Common Humanitarian Fund (with funding from UNDP and UNICEF)  
Government of Norway  
International Medical Corps/UK Department for International Development  
Liberian Ministry of Gender and Development  
Norwegian Ministry of Foreign Affairs (MFA)  
Save the Children  
Thailand Ministry of Health with funding from Global Fund to Fight Malaria

United Nations Capital Development Fund (UNCDF)  
United Nations Children's Fund (UNICEF)  
United Nations Development Fund for Women (UNIFEM)  
United Nations Development Program (UNDP)  
United Nations Food and Agriculture Organization (UNFAO)  
United Nations High Commissioner for Refugees (UNHCR) FAO  
United Nations Population Fund (UNFPA)  
United States Agency for International Development (USAID)  
United States Department of State, Bureau of Population, Refugees and Migration (BPRM)  
USAID Office of Foreign Disaster Assistance (OFDA)  
Women's Refugee Commission with funding from the Gates Foundation and the United Kingdom Department for International Development  
World Health Organization (WHO)  
World Vision with funding from the Global Fund to Fight AIDS/Tuberculosis



# Volunteers

We would like to recognize the dedication of our 2009 volunteers. Each of them took time away from their families, loved ones or jobs to help survivors of disaster heal and regain control of their lives.

Senait Abate	Anjalie Dotson	Eva Kovacs	Katelyn Pastick
Allison Allatt	Katia Dragotis	Robin Larkin	Lindsey Pete
Anna L. Anderson	Stephanie Dreke	Laura Leatherman	Sarah Powell
Eman Ausman	Abbey	Joan Leedy	Lorraine Prindle
Sigrid A. Bachmann	Engebretson Stephanie Farsht	Jane Levin Lane Lillquist	Lisa Ramsay Cathy Rand
Marian Bayer	Krista Fouquette	Svjetlana Madzar	Michael Rosenfeld
Bernard Benson	Valerie Fry	Eva Marsalkova	James Rustad
Catherine J. Benson	Minerva Grant Ruth Hamberg	Thomas Matkovits	Kirstine L. Sand
Michael Berhane	Connie Hansen	Sagari Medappa	Patricia Schlaefe
Tara Berry	Jennifer Harrington	Katie Meline	Melissa Schmidt
Parvathy Binoy		Teri L. Minard	Stephan Schriver
Christina Blum	Katharine N. Hektner	Stephanie Myers	Douglas Schwerdt
Jasna Burza		Cristina Narvaez	Katie Simota
Carla Calistri	Rebecca Heupel	Clare Naughton	Leslie Sullivan
Steve Cap	Wayne Hilbert	Bruce Nelson	Paula Sunde
Sonia Cairns	Ashley Huth	Erin C. Nelson	Alphonso Tarue
Ben Carron	Anna Jacques	Mary Beth Nierengarten	Colleen Tjosvold
Anne E. Casnovsky	Forkpayea Johnson	David Noel	Scott Torok
Hahn Chang	Sonja Johnson	David Noel	Kristin Vickstrom
Francesca Cherubini	Jonathan Jones	Sahra Noor	Jaea Vue
Bunkhean Chhun	Ilya Kaganovch	Brooke Nunn	Hanni Walker
Hayoung Cho	Ali Kappes	Patricia A. Olson	Shannon Ward
Jodi Cullen	Susan C. Kelley	Erin O'Neill	Ruslana Westerlund
Michael Czuppa	Blayne Kelly	Aaron Oppelt	Perry Witkin
Jeff Dokmo	Iris Key	Ian Oundo	
Annie Donnellan	Aleka E. Kostouros	Alexandra Owings	Andrew Young
		Kasia Paprocki	Banrith Yong Yuth

## Our 2009 Overseas Volunteers

Meredith Brandt	Karly Kupferberg	Linda Lipsy	Louise Ruhr
Diane Fisher	Aileen Langston	Clemence Pinaud	Robin Weil
Andrea Hidalgo	Eva Lathrop	Lindsey Reif	Lauren Young



Bagh	Juba	Nimule
Bangkok	Kakata	Nyala
Byumba	Kajo Keji	Port-au-Prince
Chicago	Kampala	Quetta
Chumporn	Khartoum	Ranong
Fond Parisien	Kibuye	Sangklaburi
Ganta	Kigali	Swabi
Gbarnga	Magwi	Umphang
Gereida	Malakal	Voinjama
Gituza	Mardan	Washington
Gulu	Minneapolis	Yei
Islamabad	Monrovia	

[www.ARCrelief.org](http://www.ARCrelief.org)